

# VACUUM SCREWS



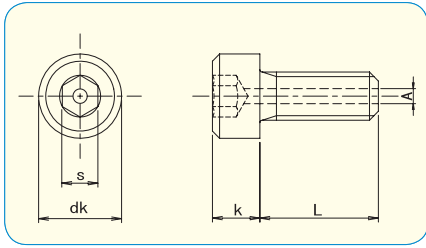
INDEX	
	PAGE
HEX SOCKET CAP SCREW WITH CENTER HOLE	2
HEX SOCKET BUTTON HEAD SCREW WITH CENTER HOLE	3
HEX HEAD CAP SCREW	3
CROSS RECESS PAN HEAD MACHINE SCREW	4
CROSS RECESS FLAT HEAD MACHINE SCREW	4



This mark means "do not contain materials limited of RoHS Directive".  
(Lead / Cadmium / Mercury / 6 Chromium / PBB / PBDE)



# HEX SOCKET CAP SCREW WITH CENTER HOLE



	M3	M4	M5	M6	M8	M10	M12
dk	5.5	7	8.5	10	13	16	18
k	3	4	5	6	8	10	12
s	2.5	3	4	5	6	8	10
A	1.2	1.5	1.5	2	2	3	3



**Material**  
Stainless Steel A2

pcs / Box

L \ d	M3	M4	M5	M6	M8	M10	M12
5	20	20					
6	20	20	10				
8	20	20	10	10			
10	20	20	10	10			
12	20	20	10	10	10		
16	20	20	10	10	10	5	
20		20	10	10	10	5	
25		20	10	10	10	5	
30		10	10	10	10	5	5
35		10	10	10	10	5	5
40			10	10	10	5	5
45				10	10	5	5
50				10	10	5	5
60					5	5	5

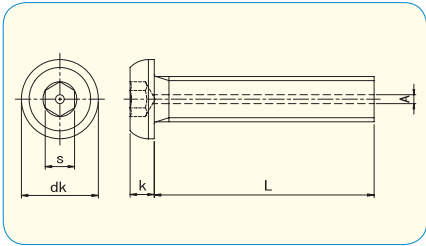
**Material**  
Stainless Steel A2, Special Chemical Polish

pcs / Box

L \ d	M3	M4	M5	M6	M8	M10	M12
5	20	20					
6	20	20	10				
8	20	20	10	10			
10	20	20	10	10			
12	20	20	10	10	10		
16	20	20	10	10	10	5	
20		20	10	10	10	5	
25		20	10	10	10	5	
30		10	10	10	10	5	5
35		10	10	10	10	5	5
40			10	10	10	5	5
45				10	10	5	5
50				10	10	5	5
60					5	5	5



# HEX SOCKET BUTTON HEAD SCREW WITH CENTER HOLE



	M3	M4	M5	M6
dk	5.7	7.6	9.5	10.5
k	1.65	2.2	2.75	3.3
s	2	2.5	3	4
A	1.2	1.5	1.5	2



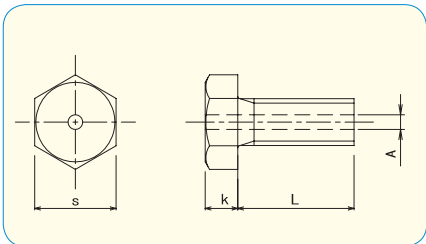
● **Material**  
Stainless Steel A2

L \ d	pcs / Box			
	M3	M4	M5	M6
5	20			
6	20	20	10	
8	20	20	10	10
10	20	20	10	10
12	20	20	10	10
16		20	10	10
20			10	10
25				10

● **Material**  
Stainless Steel A2, Special Chemical Polish

L \ d	pcs / Box			
	M3	M4	M5	M6
5	20			
6	20	20	10	
8	20	20	10	10
10	20	20	10	10
12	20	20	10	10
16		20	10	10
20			10	10
25				10

# HEX HEAD CAP SCREW WITH CENTER HOLE



	M4	M5	M6	M8
s	7	8	10	13
k	2.8	3.5	4	5.3
A	1.5	1.5	2	2



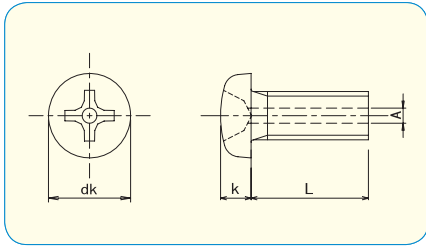
● **Material**  
Stainless Steel A2

L \ d	pcs / Box			
	M4	M5	M6	M8
10	10	10		
12	10	10		
16	10	10	10	10
20	10	10	10	10
25		10	10	10
30				10

● **Material**  
Stainless Steel A2, Special Chemical Polish

L \ d	pcs / Box			
	M4	M5	M6	M8
10	10	10		
12	10	10		
16	10	10	10	10
20	10	10	10	10
25		10	10	10
30				10

**CROSS RECESS PAN HEAD MACHINE SCREW WITH CENTER HOLE**



	M3	M4	M5	M6
dk	5.5	7	9	10.5
k	2	2.6	3.3	3.9
A	1.2	1.5	1.5	2



RoHS Directive Compliance

• **Material**

Stainless Steel A2

pcs / Box

L \ d	M3	M4	M5	M6
5	20	20		
6	20	20	10	
8	20	20	10	10
10	20	20	10	10
12	20	20	10	10
16		20	10	10
20			10	10
25				10

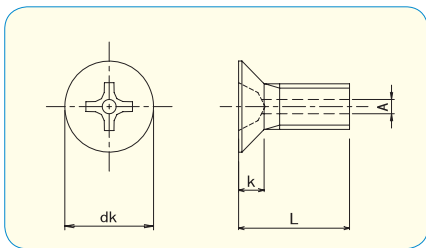
• **Material**

Stainless Steel A2, Special Chemical Polish

pcs / Box

L \ d	M3	M4	M5	M6
5	20	20		
6	20	20	10	
8	20	20	10	10
10	20	20	10	10
12	20	20	10	10
16		20	10	10
20			10	10
25				10

**CROSS RECESS FLAT HEAD MACHINE SCREW WITH CENTER HOLE**



	M3	M4	M5	M6
dk	6	8	10	12
k	1.75	2.3	2.8	3.4
A	1.2	1.5	1.5	2



RoHS Directive Compliance

• **Material**

Stainless Steel A2

pcs / Box

L \ d	M3	M4	M5	M6
5	20	20		
6	20	20	10	
8	20	20	10	10
10	20	20	10	10
12	20	20	10	10
16		20	10	10
20			10	10
25				10

• **Material**

Stainless Steel A2, Special Chemical Polish

pcs / Box

L \ d	M3	M4	M5	M6
5	20	20		
6	20	20	10	
8	20	20	10	10
10	20	20	10	10
12	20	20	10	10
16		20	10	10
20			10	10
25				10

