

## Telephone prices

**Coins** – From 16th November 2006 the minimum fee is 40p for the first 20 minutes, then 10p for each minute thereafter.

**Payment by Euro** – Minimum fee 1 Euro. Length of call depends on the rate of the Euro used in this payphone, please call 100 and request the BT Payphones Card.

**Credit/Debit Cards** – 20p per minute. Minimum fee 10p. Please call 100 and request the BT Payphones Card.

\*Excludes non-geographic numbers (e.g. 0845, 0870), international personal numbering, paging services and calls made via mobile phones.

## Payment

Payment methods may vary between payphones. Some payphones accept E2 coins. Some coins can only be used for directly dialled calls.

Where coins are accepted, only unused coins will be returned. Calls to Emergency Services and freephone numbers are free.

**Calls using a Credit/Debit Card** – To make a card payment, please follow the instructions. If there is no card reader on the payphone, please call 100 and request the BT Payphones Card.

310 W  
express  
WXX

310 Tamper



 JAPAN



# Tamper Resistant Fasteners



# Security Fasteners

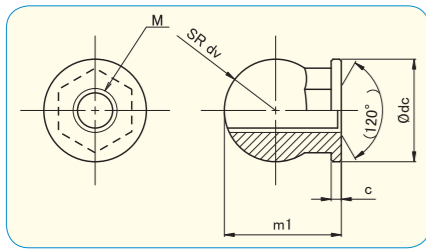


## INDEX

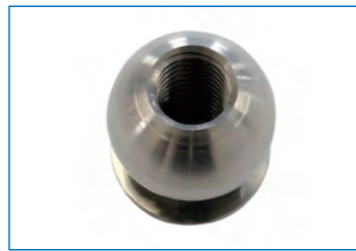
Tamper Resistant Nut CANDY NUT P.4	FUJIYAMA LOCK BUTTON BOLT P.4	SAKURA LOCK BUTTON BOLT P.5	PIN-BUTTON HEX SOCKET SCREWS P.6-7	PIN-FLAT HEAD HEX SOCKET SCREWS P.8
PIN-BUTTON HEAD TAPPING SCREWS P.9	PIN-FLAT TAPPING SCREWS P.9	PIN-HEX FLAT HEAD NO-PLUG SCREWS P.10	PIN-HEX SOCKET SET SCREW CUP POINT P.10	LAPIS FLAT HEAD MACHINE SCREWS <b>NEW !!</b> P.11
LAPIS TRUSS HEAD MACHINE SCREWS <b>NEW !!</b> P.11	PIN-BUTTON 6-LOBE BOLT P.12-13	PIN-FLAT 6-LOBE BOLT P.14	PIN BUTTON 6-LOBE TAPPING SCREWS P.15	PIN-FLAT 6-LOBE TAPPING SCREWS P.15
PIN-PAN 6-LOBE MACHINE SCREWS P.16	PIN-FLAT 6-LOBE MACHINE SCREWS P.17	PIN-TRUSS 6-LOBE MACHINE SCREWS P.18	PIN-BINDING 6-LOBE MACHINE SCREWS P.19	PIN-PAN 6-LOBE MACHINE SCREWS assembled with flat washer P.19
PIN-PAN 6-LOBE MACHINE SCREWS assembled with spring washer P.20	PIN-PAN 6-LOBE MACHINE SCREWS assembled with flat & spring washer P.20	PIN-PAN 6-LOBE MACHINE SCREWS assembled with small flat & spring washer P.21	PIN-PAN 6-LOBE MACHINE SCREWS assembled with spring/round washer P.21	PIN-PAN 6-LOBE TAPPING SCREWS type A P.22
PIN-FLAT 6-LOBE TAPPING SCREWS type A P.22	PIN-TRUSS 6-LOBE TAPPING SCREWS type A P.23	PIN-PAN HEAD 6-LOBE THREAD FORMING SCREWS type B P.23	PIN-PAN HEAD 6-LOBE SELF DRILL SCREWS P.24	2 HOLE PAN HEAD MACHINE SCREWS P.25
2 HOLE FLAT HEAD MACHINE SCREWS P.26	2 HOLE PAN HEAD TAPPING SCREWS P.27	2 HOLE FLAT HEAD TAPPING SCREWS P.28	2 HOLE NUT P.29	ONE-SIDE PAN HEAD MACHINE SCREWS P.30
ONE-SIDE ROUND HEAD TAPPING SCREWS P.31	TRI-WING PAN HEAD MACHINE SCREWS P.32	TRI-WING FLAT HEAD MACHINE SCREWS P.33	TRI-WING PAN HEAD TAPPING SCREWS P.34	TRI-WING FLAT HEAD NO-PLUG SCREWS P.34
SYSTEM 5 MACHINE SCREWS P.35	SYSTEM 6 MACHINE SCREWS P.36	PIN-PAN HEAD CROSS RECESS MACHINE SCREWS P.36	TRICLE WITH PIN BUTTON BOLT P.37	TRICLE WITH PIN FLAT BOLT P.38
NON-RECESS TRF P.39	TOOLS / Order Made TRF P.40-42			



## Tamper Resistant Nut CANDY NUT



●Material  
Stainless Steel A2



意匠登録第 1546832 号



<Application>

Size	φ dc	φ dv	m1	c
M10	21	21	22.5	1.5
M12	25	25	26.5	1.5

SIZE	PART #	Pkg q'ty
M10	CDNUTM10	1
M12	CDNUTM12	1

\*other size order made is available.



<Application>



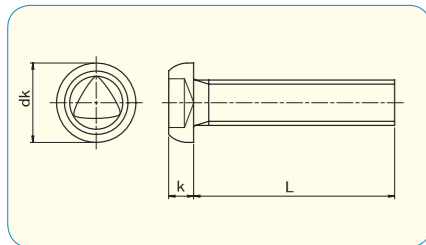
Difficult to remove by standard tool.

### CANDY NUT SPANA Tools for Candy Nut

- This tools are for Candy Nut
- Difficult to remove by standard tool.

PART #	Pkg q'ty	SIZE
CDNUT-SPN10	1	M10
CDNUT-SPN12	1	M12

## FUJIYAMA LOCK BUTTON BOLT



●Material  
Stainless Steel A2  
Stainless Steel A2 + Blacken(Order Made)  
Stainless Steel A2 + Nylok(Order Made)



▲ Recess shape similar to Mr. Fuji ▲

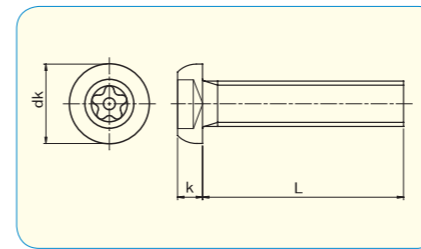
	M3	M4	M5	M6
dk	5.7	7.6	9.5	10.5
k	1.65	2.2	2.75	3.3
Drive Size	3	4	5	6

SIZE	PART #		Pkg q'ty
	d	L	
M3	6	EL010306	100
	8	EL010308	100
	10	EL010310	100
	12	EL010312	100
	16	EL010316	100
20	EL010320	100	

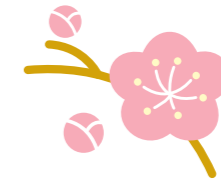
SIZE	PART #		Pkg q'ty
	d	L	
M4	6	EL010406	100
	8	EL010408	100
	10	EL010410	100
	12	EL010412	100
	16	EL010416	100
20	EL010420	100	
M5	10	EL010510	100
	12	EL010512	100
	16	EL010516	100
	20	EL010520	100
	25	EL010525	100

SIZE	PART #		Pkg q'ty
	d	L	
M6	8	EL010608	100
	10	EL010610	100
	12	EL010612	100
	16	EL010616	100
	20	EL010620	100
25	EL010625	100	

## SAKURA LOCK BUTTON BOLT



●Material  
Stainless Steel A2  
Stainless Steel A2 + Blacken(Order Made)  
Stainless Steel A2 + Nylok(Order Made)



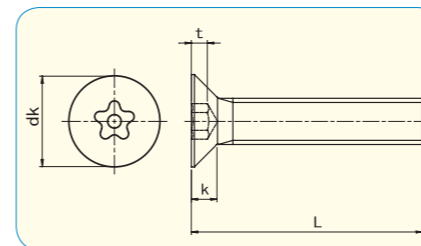
	M3	M4	M5	M6	M8
dk	5.7	7.6	9.5	10.5	14
k	1.63	2.2	2.75	3.3	4.4
Drive Size	3	4	56	56	8

SIZE	PART #		Pkg q'ty
	d	L	
M3	6	BK010306	100
	8	BK010308	100
	10	BK010310	100
	12	BK010312	100
	16	BK010316	100
20	BK010320	100	
M4	6	BK010406	100
	8	BK010408	100
	10	BK010410	100
	12	BK010412	100
	16	BK010416	100
	20	BK010420	100
	25	BK010425	100
	30	BK010430	100
40	BK010440	100	

SIZE	PART #		Pkg q'ty
	d	L	
M5	8	BK010508	100
	10	BK010510	100
	12	BK010512	100
	16	BK010516	100
	20	BK010520	100
	25	BK010525	100
M6	30	BK010530	100
	35	BK010535	100
	40	BK010540	100
	50	BK010550	100
	60	BK010560	100

SIZE	PART #		Pkg q'ty
	d	L	
M6	8	BK010608	100
	10	BK010610	100
	12	BK010612	100
	16	BK010616	100
	20	BK010620	100
	25	BK010625	100
M8	30	BK010630	100
	40	BK010640	100
	50	BK010650	100
	10	BK010810	100
	12	BK010812	100
	16	BK010816	100
	20	BK010820	100
	25	BK010825	100
	30	BK010830	100
	40	BK010840	100
50	BK010850	100	

## SAKURA LOCK FLAT HEAD BOLT



●Material  
Stainless Steel A2  
Stainless Steel A2 + Blacken(Order Made)  
Stainless Steel A2 + Nylok(Order Made)



	M4	M5	M6
dk	8	10	12
k	2.3	2.8	3.4
	4	56	56

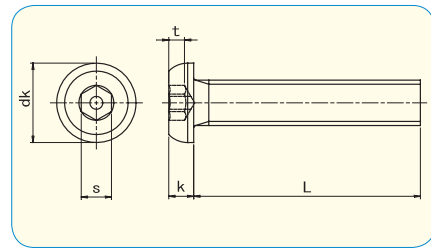
SIZE	PART #		Pkg q'ty
	d	L	
M4	10	BK020410	100
	16	BK020416	100
	20	BK020420	100

SIZE	PART #		Pkg q'ty
	d	L	
M5	10	BK020510	100
	16	BK020516	100
	25	BK020525	100
	40	BK020540	100

SIZE	PART #		Pkg q'ty
	d	L	
M6	12	BK020612	100
	16	BK020616	100
	20	BK020620	100
	30	BK020630	100
	40	BK020640	100
	50	BK020650	100

PIN-BUTTON HEX SOCKET SCREWS

PIN-BUTTON HEX SOCKET SCREWS



- Material
- Stainless Steel A2
- Stainless Steel A2 + Blacken
- Stainless Steel A2 + Nylok



	M3	M4	M5	M6	M8	M10	M12
dk	5.7	7.6	9.5	10.5	14	17.5	21
k	1.65	2.2	2.75	3.3	4.4	5.5	6.6
s	2	2.5	3	4	5	6	8
Drive Size	2	2.5	3	4	5	6	8

	#6-32	#8-32	#10-24	#10-32	1/4-20	5/16-18
dk	6.7	8	9.2	9.2	11	14
k	1.9	2.2	2.6	2.6	3.4	4.3
s	1/8	1/8	5/32	5/32	5/32	3/16
Drive Size	1/8	1/8	* 5/32	* 5/32	5/32	3/16

\* 『#10-24x1-1/2』 and 『#10-32x1-1/2』 use 1/8 size driver.

SIZE	PART #			Pkg q'ty	
	d	L	S.S. A2		
M3	6	HE010306	HE010306BK	HE010306NY	100
	8	HE010308	HE010308BK	HE010308NY	100
	10	HE010310	HE010310BK	HE010310NY	100
	12	HE010312	HE010312BK	HE010312NY	100
	16	HE010316	HE010316BK	HE010316NY	100
	25	HE010325	HE010325BK	HE010325NY	100
M4	6	HE010406	HE010406BK	HE010406NY	100
	8	HE010408	HE010408BK	HE010408NY	100
	10	HE010410	HE010410BK	HE010410NY	100
	12	HE010412	HE010412BK	HE010412NY	100
	16	HE010416	HE010416BK	HE010416NY	100
	25	HE010425	HE010425BK	HE010425NY	100
M5	10	HE010510	HE010510BK	HE010510NY	100
	12	HE010512	HE010512BK	HE010512NY	100
	16	HE010516	HE010516BK	HE010516NY	100
	20	HE010520	HE010520BK	HE010520NY	100
	25	HE010525	HE010525BK	HE010525NY	100
	30	HE010530	HE010530BK	HE010530NY	100
M6	8	HE010608	HE010608BK	HE010608NY	100
	10	HE010610	HE010610BK	HE010610NY	100
	12	HE010612	HE010612BK	HE010612NY	100
	16	HE010616	HE010616BK	HE010616NY	100
	20	HE010620	HE010620BK	HE010620NY	100
	25	HE010625	HE010625BK	HE010625NY	100
M8	10	HE010810	HE010810BK	HE010810NY	100
	12	HE010812	HE010812BK	HE010812NY	100
	16	HE010816	HE010816BK	HE010816NY	100
	20	HE010820	HE010820BK	HE010820NY	100
	25	HE010825	HE010825BK	HE010825NY	100
	30	HE010830	HE010830BK	HE010830NY	100
M10	20	HE011020	HE011020BK	HE011020NY	100
	25	HE011025	HE011025BK	HE011025NY	100
	30	HE011030	HE011030BK	HE011030NY	100
	35	HE011035	HE011035BK	HE011035NY	100
	40	HE011040	HE011040BK	HE011040NY	50
	50	HE011050	HE011050BK	HE011050NY	50
M12	20	HE011220	HE011220BK	HE011220NY	10
	25	HE011225	HE011225BK	HE011225NY	10
	30	HE011230	HE011230BK	HE011230NY	10
	35	HE011235	HE011235BK	HE011235NY	10
	40	HE011240	HE011240BK	HE011240NY	10
	50	HE011250	HE011250BK	HE011250NY	10

SIZE	PART #			Pkg q'ty	
	d	L	S.S. A2		
M8	10	HE010810	HE010810BK	HE010810NY	100
	12	HE010812	HE010812BK	HE010812NY	100
	16	HE010816	HE010816BK	HE010816NY	100
	20	HE010820	HE010820BK	HE010820NY	100
	25	HE010825	HE010825BK	HE010825NY	100
	30	HE010830	HE010830BK	HE010830NY	100
M10	20	HE011020	HE011020BK	HE011020NY	100
	25	HE011025	HE011025BK	HE011025NY	100
	30	HE011030	HE011030BK	HE011030NY	100
	35	HE011035	HE011035BK	HE011035NY	100
	40	HE011040	HE011040BK	HE011040NY	50
	50	HE011050	HE011050BK	HE011050NY	50
M12	20	HE011220	HE011220BK	HE011220NY	10
	25	HE011225	HE011225BK	HE011225NY	10
	30	HE011230	HE011230BK	HE011230NY	10
	35	HE011235	HE011235BK	HE011235NY	10
	40	HE011240	HE011240BK	HE011240NY	10
	50	HE011250	HE011250BK	HE011250NY	10

※mark: Half thread  
 • M8x55/M8x60 thread length=50mm  
 • M10x50/M10x60/M10x70 thread length=40mm  
 • M12x70/M12x80/M12x90/M12x100 thread length=60mm

SIZE	PART #			Pkg q'ty	
	d	L	S.S. A2		
#6-32	3/8	HE01.00632.030	HE0100632030BK	HE0100632030NY	100
	1/2	HE01.00632.040	HE0100632040BK	HE0100632040NY	100
	3/4	HE01.00632.060	HE0100632060BK	HE0100632060NY	100
	1	HE01.00632.100	HE0100632100BK	HE0100632100NY	100
#8-32	3/8	HE01.00832.030	HE0100832030BK	HE0100832030NY	100
	1/2	HE01.00832.040	HE0100832040BK	HE0100832040NY	100
	3/4	HE01.00832.060	HE0100832060BK	HE0100832060NY	100
#10-24	1/2	HE01.01024.040	HE0101024040BK	HE0101024040NY	100
	3/4	HE01.01024.060	HE0101024060BK	HE0101024060NY	100
	1	HE01.01024.100	HE0101024100BK	HE0101024100NY	100
	1-1/4	HE01.01024.120	HE0101024120BK	HE0101024120NY	100
#10-32	1/2	HE01.01032.040	HE0101032040BK	HE0101032040NY	100
	3/4	HE01.01032.060	HE0101032060BK	HE0101032060NY	100
	1	HE01.01032.100	HE0101032100BK	HE0101032100NY	100
1/4-20	1/2	HE01.02020.040	HE0102020040BK	HE0102020040NY	100
	3/4	HE01.02020.060	HE0102020060BK	HE0102020060NY	100
	1	HE01.02020.100	HE0102020100BK	HE0102020100NY	100
	1-1/4	HE01.02020.120	HE0102020120BK	HE0102020120NY	100
5/16-18	1/2	HE01.02518.060	HE0102518060BK	HE0102518060NY	100
	3/4	HE01.02518.100	HE0102518100BK	HE0102518100NY	100
	1-1/4	HE01.02518.120	HE0102518120BK	HE0102518120NY	100
	1-1/2	HE01.02518.140	HE0102518140BK	HE0102518140NY	100

**Nylok®**

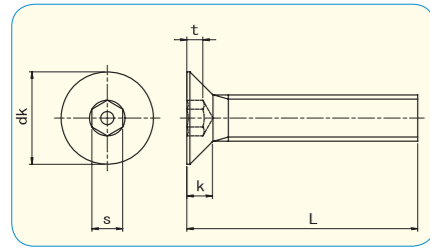
- Exceptional vibration resistance
- Reusable
- Applicable to any head configuration
- Environmentally friendly
- Cost effective

Please see page 40-41 for tools.

Please see page 40-41 for tools.



## PIN-FLAT HEAD HEX SOCKET SCREWS



- Material
  - Stainless Steel A2
  - Stainless Steel A2 + Blacken
  - Stainless Steel A2 + Nylok



	M3	M4	M5	M6	M8
dk	6.0	8.0	10.0	12.0	16.0
k	1.75	2.3	2.8	3.4	4.7
s	2	2.5	3	4	5
Drive Size	2	2.5	3	4	5

	#6-32	#8-32	#10-24	#10-32	1/4-20	5/16-18
dk	7.4	8.6	9.9	9.9	13	16.1
k	2.6	3.2	3.6	3.6	4.5	5.6
s	1/8	1/8	5/32	5/32	5/32	3/16
Drive Size	1/8	1/8	5/32	5/32	5/32	3/16

SIZE	PART #			Pkg q'ty		
	d	L	S.S. A2		S.S.A2+Blacken	S.S.A2+Nylok
M3	6		HE020306	HE020306BK	HE020306NY	100
	8		HE020308	HE020308BK	HE020308NY	100
	10		HE020310	HE020310BK	HE020310NY	100
	12		HE020312	HE020312BK	HE020312NY	100
	16		HE020316	HE020316BK	HE020316NY	100
	20		HE020320	HE020320BK	HE020320NY	100
M4	8		HE020408	HE020408BK	HE020408NY	100
	10		HE020410	HE020410BK	HE020410NY	100
	12		HE020412	HE020412BK	HE020412NY	100
	16		HE020416	HE020416BK	HE020416NY	100
	20		HE020420	HE020420BK	HE020420NY	100
	25		HE020425	HE020425BK	HE020425NY	100
M5	10		HE020510	HE020510BK	HE020510NY	100
	12		HE020512	HE020512BK	HE020512NY	100
	16		HE020516	HE020516BK	HE020516NY	100
	20		HE020520	HE020520BK	HE020520NY	100
	25		HE020525	HE020525BK	HE020525NY	100
	30		HE020530	HE020530BK	HE020530NY	100
M6	10		HE020610	HE020610BK	HE020610NY	100
	12		HE020612	HE020612BK	HE020612NY	100
	16		HE020616	HE020616BK	HE020616NY	100
	20		HE020620	HE020620BK	HE020620NY	100
	25		HE020625	HE020625BK	HE020625NY	100
	30		HE020630	HE020630BK	HE020630NY	100
M8	10		HE020810	HE020810BK	HE020810NY	100
	12		HE020812	HE020812BK	HE020812NY	100
	16		HE020816	HE020816BK	HE020816NY	100
	20		HE020820	HE020820BK	HE020820NY	100
	25		HE020825	HE020825BK	HE020825NY	100
	30		HE020830	HE020830BK	HE020830NY	100

SIZE	PART #			Pkg q'ty		
	d	L	S.S. A2		S.S.A2+Blacken	S.S.A2+Nylok
#6-32	1/2		HE02.00632.040	HE0200632040BK	HE0200632040NY	100
	3/4		HE02.00632.060	HE0200632060BK	HE0200632060NY	100
	1		HE02.00632.100	HE0200632100BK	HE0200632100NY	100
#8-32	1/2		HE02.00832.040	HE0200832040BK	HE0200832040NY	100
	3/4		HE02.00832.060	HE0200832060BK	HE0200832060NY	100
	1		HE02.00832.100	HE0200832100BK	HE0200832100NY	100
#10-24	1/2		HE02.01024.040	HE0201024040BK	HE0201024040NY	100
	3/4		HE02.01024.060	HE0201024060BK	HE0201024060NY	100
	1		HE02.01024.100	HE0201024100BK	HE0201024100NY	100
	1-1/4		HE02.01024.120	HE0201024120BK	HE0201024120NY	100
	1-1/2		HE02.01024.140	HE0201024140BK	HE0201024140NY	100
#10-32	1		HE02.01032.100	HE0201032100BK	HE0201032100NY	100
	1-1/4		HE02.01032.120	HE0201032120BK	HE0201032120NY	100
	1-1/2		HE02.01032.140	HE0201032140BK	HE0201032140NY	100
1/4-20	1/2		HE02.02020.040	HE0202020040BK	HE0202020040NY	100
	3/4		HE02.02020.060	HE0202020060BK	HE0202020060NY	100
	1		HE02.02020.100	HE0202020100BK	HE0202020100NY	100
	1-1/4		HE02.02020.120	HE0202020120BK	HE0202020120NY	100
	1-1/2		HE02.02020.140	HE0202020140BK	HE0202020140NY	100
5/16-18	3/4		HE02.02518.060	HE0202518060BK	HE0202518060NY	100
	1		HE02.02518.100	HE0202518100BK	HE0202518100NY	100
	1-1/4		HE02.02518.120	HE0202518120BK	HE0202518120NY	100
	1-1/2		HE02.02518.140	HE0202518140BK	HE0202518140NY	100
	2		HE02.02518.200	HE0202518200BK	HE0202518200NY	100

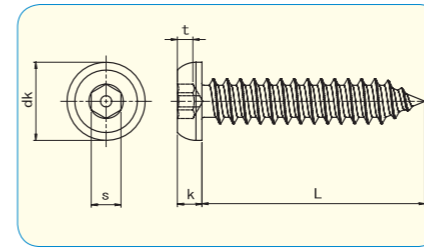
※mark: Half thread  
 • M8x60 thread length=50mm

**Nylok®**

- Exceptional vibration resistance
- Reusable
- Applicable to any head configuration
- Environmentally friendly
- Cost effective

Please see page 40-41 for tools.

## PIN-BUTTON HEAD TAPPING SCREWS



- Material
  - Stainless Steel A2
  - Stainless Steel A2 + Blacken
- Thread
  - Type AB

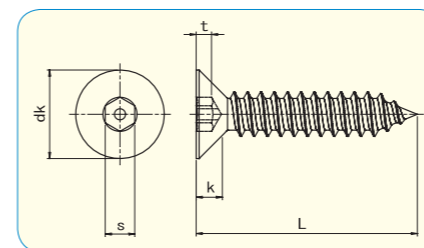


SIZE	PART #		Pkg q'ty	
	d	L		
3.5	10	HE033510	HE033510BK	100
	13	HE033513	HE033513BK	100
	16	HE033516	HE033516BK	100
	20	HE033520	HE033520BK	100
	25	HE033525	HE033525BK	100
4.2	10	HE034210	HE034210BK	100
	13	HE034213	HE034213BK	100
	16	HE034216	HE034216BK	100
	20	HE034220	HE034220BK	100
	25	HE034225	HE034225BK	100

	3.5	4.2	4.8
dk	6.66	7.93	9.17
k	1.86	2.21	2.57
s	1/8	5/32	5/32
Drive Size	1/8	5/32	5/32

SIZE	PART #		Pkg q'ty	
	d	L		
4.8	13	HE034813	HE034813BK	100
	16	HE034816	HE034816BK	100
	20	HE034820	HE034820BK	100
	25	HE034825	HE034825BK	100
	32	HE034832	HE034832BK	100

## PIN-FLAT HEAD TAPPING SCREWS



- Material
  - Stainless Steel A2
  - Stainless Steel A2 + Blacken
- Thread
  - Type AB



SIZE	PART #		Pkg q'ty	
	d	L		
3.5	10	HE043510	HE043510BK	100
	13	HE043513	HE043513BK	100
	16	HE043516	HE043516BK	100
	20	HE043520	HE043520BK	100
	25	HE043525	HE043525BK	100
4.2	13	HE044213	HE044213BK	100
	16	HE044216	HE044216BK	100
	20	HE044220	HE044220BK	100
	25	HE044225	HE044225BK	100
	32	HE044232	HE044232BK	100

	3.5	4.2	4.8
dk	7.8	9.12	10.44
k	2.47	2.85	3.23
s	1/8	5/32	5/32
Drive Size	1/8	5/32	5/32

SIZE	PART #		Pkg q'ty	
	d	L		
4.8	13	HE044813	HE044813BK	100
	16	HE044816	HE044816BK	100
	20	HE044820	HE044820BK	100
	25	HE044825	HE044825BK	100
	32	HE044832	HE044832BK	100

Please see page 40-41 for tools.

EL BK HE LP TX SP OW TW SF SS PH TC NR TOOLS / Order Made

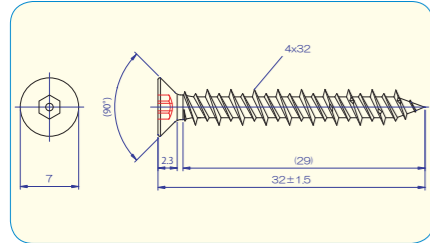
EL BK HE LP TX SP OW TW SF SS PH TC NR TOOLS / Order Made

## PIN-HEX FLAT HEAD NO-PLUG SCREWS

### NO-PLUG SCREWS for Concrete

**Features**

Best to use on a concrete wall without the plastic plugs.  
Hi-Low and double started thread.



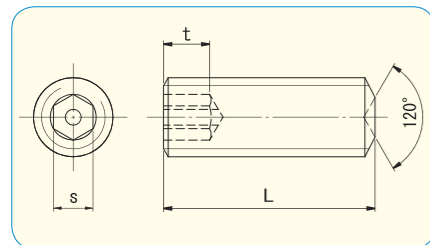
**Material**  
Stainless 410 Passivation



dk	4
k	7
Drive Size	2.5
Drill dia	3.4

SIZE		PART #	Pkg q'ty
d	L		
4	32	HE620432	100

## PIN-HEX SOCKET SET SCREW CUP POINT



**Material**  
Alloy steel  
45H



	M5	M6	M8
s	2.5	3.0	4.0
t	min3.0	min3.5	min5.0
Drive Size	2.5	3	4

SIZE	PART #		Pkg q'ty	
	d	L		
M5	8	HS010508	HS010508NY	100
	10	HS010510	HS010510NY	100
	12	HS010512	HS010512NY	100
M6	8	HS010608	HS010608NY	100
	10	HS010610	HS010610NY	100
	12	HS010612	HS010612NY	100
M8	16	HS010616	HS010616NY	100
	10	HS010810	HS010810NY	100
	12	HS010812	HS010812NY	100
	16	HS010816	HS010816NY	100

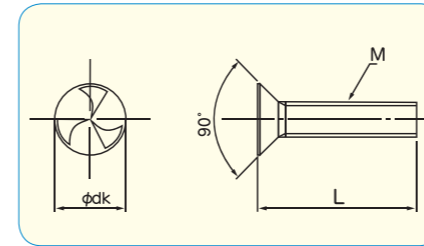
**Nylok®**

- Exceptional vibration resistance
- Reusable
- Applicable to any head configuration
- Environmentally friendly
- Cost effective

Please see page 40-41 for tools.

## LAPIS FLAT HEAD MACHINE SCREWS

**Caution** : The tool is one way, can only be used when fastening. It is difficult to remove after fastened.



**Material**  
Stainless Steel A2



	M3	M4	M5	M6
dk	6	8	10	12

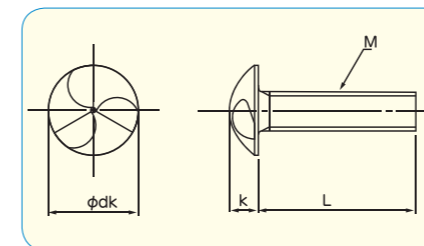
SIZE	PART#		Pkg q'ty
	d	L	
M3	6	LP120306	100
	8	LP120308	100
	10	LP120310	100
	12	LP120312	100
M4	8	LP120408	100
	10	LP120410	100
	12	LP120412	100
	16	LP120416	100
	20	LP120420	100

SIZE	PART#		Pkg q'ty
	d	L	
M5	10	LP120510	100
	12	LP120512	100
	16	LP120516	100
	20	LP120520	100
M6	12	LP120612	100
	16	LP120616	100
	20	LP120620	100
	25	LP120625	100
	30	LP120630	100

Please see page 42 for tools.

## LAPIS TRUSS HEAD MACHINE SCREWS

**Caution** : The tool is one way, can only be used when fastening. It is difficult to remove after fastened.



**Material**  
Stainless Steel A2



	M3	M4	M5	M6
dk	6.9	9.4	11.8	14
k	2.3	2.8	3.6	4.2

SIZE	PART#		Pkg q'ty
	d	L	
M3	6	LP130306	100
	8	LP130308	100
	10	LP130310	100
	12	LP130312	100
M4	8	LP130408	100
	10	LP130410	100
	12	LP130412	100
	16	LP130416	100
	20	LP130420	100

SIZE	PART#		Pkg q'ty
	d	L	
M5	10	LP130510	100
	12	LP130512	100
	16	LP130516	100
	20	LP130520	100
M6	12	LP130612	100
	16	LP130616	100
	20	LP130620	100
	25	LP130625	100
	30	LP130630	100

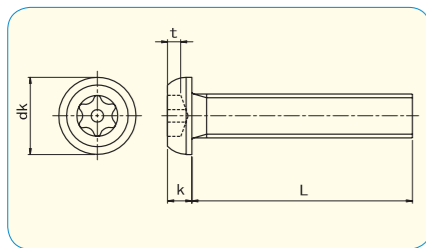
Please see page 42 for tools.

EL  
BK  
HE  
LP  
TX  
SP  
OW  
TW  
SF  
SS  
PH  
TC  
NR  
TOOLS / Order Made

EL  
BK  
HE  
LP  
TX  
SP  
OW  
TW  
SF  
SS  
PH  
TC  
NR  
TOOLS / Order Made

**PIN-BUTTON 6-LOBE BOLT**

**PIN-BUTTON 6-LOBE BOLT**



- **Material**  
Stainless Steel A2  
Stainless Steel A2 + Blacken  
Stainless Steel A2 + Nylok



	M3	M4	M5	M6	M8	M10
dk	5.7	7.6	9.5	10.5	14	17.5
k	1.65	2.2	2.75	3.3	4.4	5.5
Drive Size	T10	T20	T25	T30	T40	T45



SIZE	PART #			Pkg q'ty		
	d	L	S.S. A2			
M3	6		TX010306	TX010306BK	TX010306NY	100
	8		TX010308	TX010308BK	TX010308NY	100
	10		TX010310	TX010310BK	TX010310NY	100
	12		TX010312	TX010312BK	TX010312NY	100
	16		TX010316	TX010316BK	TX010316NY	100
	20		TX010320	TX010320BK	TX010320NY	100
M4	6		TX010406	TX010406BK	TX010406NY	100
	8		TX010408	TX010408BK	TX010408NY	100
	10		TX010410	TX010410BK	TX010410NY	100
	12		TX010412	TX010412BK	TX010412NY	100
	16		TX010416	TX010416BK	TX010416NY	100
	20		TX010420	TX010420BK	TX010420NY	100
M5	10		TX010510	TX010510BK	TX010510NY	100
	12		TX010512	TX010512BK	TX010512NY	100
	16		TX010516	TX010516BK	TX010516NY	100
	20		TX010520	TX010520BK	TX010520NY	100
	25		TX010525	TX010525BK	TX010525NY	100
	30		TX010530	TX010530BK	TX010530NY	100
M6	8		TX010608	TX010608BK	TX010608NY	100
	10		TX010610	TX010610BK	TX010610NY	100
	12		TX010612	TX010612BK	TX010612NY	100
	16		TX010616	TX010616BK	TX010616NY	100
	20		TX010620	TX010620BK	TX010620NY	100
	25		TX010625	TX010625BK	TX010625NY	100
M8	10		TX010810	TX010810BK	TX010810NY	100
	12		TX010812	TX010812BK	TX010812NY	100
	16		TX010816	TX010816BK	TX010816NY	100
	20		TX010820	TX010820BK	TX010820NY	100
	25		TX010825	TX010825BK	TX010825NY	100
	30		TX010830	TX010830BK	TX010830NY	100
M10	20		TX011020	TX011020BK	TX011020NY	100
	25		TX011025	TX011025BK	TX011025NY	100
	30		TX011030	TX011030BK	TX011030NY	100
	35		TX011035	TX011035BK	TX011035NY	50
	40		TX011040	TX011040BK	TX011040NY	50
	50		TX011050	TX011050BK	TX011050NY	50

SIZE	PART #			Pkg q'ty		
	d	L	S.S. A2			
M6	8		TX010608	TX010608BK	TX010608NY	100
	10		TX010610	TX010610BK	TX010610NY	100
	12		TX010612	TX010612BK	TX010612NY	100
	16		TX010616	TX010616BK	TX010616NY	100
	20		TX010620	TX010620BK	TX010620NY	100
	25		TX010625	TX010625BK	TX010625NY	100
M8	10		TX010810	TX010810BK	TX010810NY	100
	12		TX010812	TX010812BK	TX010812NY	100
	16		TX010816	TX010816BK	TX010816NY	100
	20		TX010820	TX010820BK	TX010820NY	100
	25		TX010825	TX010825BK	TX010825NY	100
	30		TX010830	TX010830BK	TX010830NY	100
M10	20		TX011020	TX011020BK	TX011020NY	100
	25		TX011025	TX011025BK	TX011025NY	100
	30		TX011030	TX011030BK	TX011030NY	100
	35		TX011035	TX011035BK	TX011035NY	50
	40		TX011040	TX011040BK	TX011040NY	50
	50		TX011050	TX011050BK	TX011050NY	50

※mark: Half thread  
 • M8x60 thread length=50mm  
 • M10x50/M10x60/M10x70 thread length=40mm

Thread cutting service!

Need special length screw?  
 We can customize and offer you from 1pc!

	#6-32	#10-24	#10-32	1/4-20	5/16-18
dk	6.7	9.2	9.2	11	14
k	1.9	2.6	2.6	3.4	4.3
Drive Size	T10	T25	T25	T27	T40

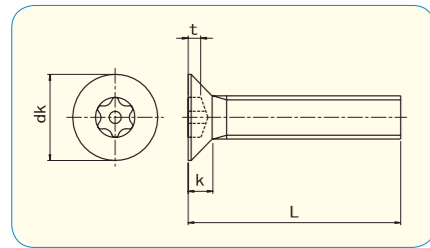
SIZE	PART #			Pkg q'ty		
	d	L	S.S. A2			
#6-32	3/8		TX01.00632.030	TX0100632030BK	TX0100632030NY	100
	1/2		TX01.00632.040	TX0100632040BK	TX0100632040NY	100
	3/4		TX01.00632.060	TX0100632060BK	TX0100632060NY	100
	1		TX01.00632.100	TX0100632100BK	TX0100632100NY	100
#10-24	1/2		TX01.01024.100	TX0101024100BK	TX0101024100NY	100
	1		TX01.01024.140	TX0101024140BK	TX0101024140NY	100
	1-1/4		TX01.01024.120	TX0101024120BK	TX0101024120NY	100
	1-1/2		TX01.01024.140	TX0101024140BK	TX0101024140NY	100
#10-32	1/2		TX01.01032.040	TX0101032040BK	TX0101032040NY	100
	3/4		TX01.01032.060	TX0101032060BK	TX0101032060NY	100
	1-1/4		TX01.01032.120	TX0101032120BK	TX0101032120NY	100
	1-1/2		TX01.01032.140	TX0101032140BK	TX0101032140NY	100
1/4-20	3/4		TX01.02020.060	TX0102020060BK	TX0102020060NY	100
	1		TX01.02020.100	TX0102020100BK	TX0102020100NY	100
	1-1/4		TX01.02020.120	TX0102020120BK	TX0102020120NY	100
5/16-18	1-1/2		TX01.02020.140	TX0102020140BK	TX0102020140NY	100
	3/4		TX01.02518.060	TX0102518060BK	TX0102518060NY	100
	1		TX01.02518.100	TX0102518100BK	TX0102518100NY	100

**Nylok®**

- Exceptional vibration resistance
- Reusable
- Applicable to any head configuration
- Environmentally friendly
- Cost effective



### PIN-FLAT 6-LOBE BOLT



- Material
  - Stainless Steel A2
  - Stainless Steel A2 + Blacken
  - Stainless Steel A2 + Nylok



	M3	M4	M5	M6	M8
dk	6.0	8.0	10.0	12.0	16.0
k	1.75	2.3	2.8	3.4	4.7
Drive Size	T10	T20	T25	T30	T40

	#6-32	#10-24	#10-32	1/4-20
dk	7.4	9.9	9.9	13
k	2.6	3.6	3.6	4.5
Drive Size	T10	T20	T20	T27

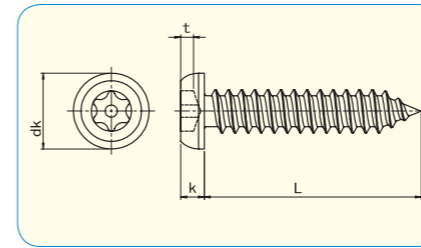
SIZE	PART #			Pkg q'ty	
	d	L	S.S. A2		
M3	6	TX020306	TX020306BK	TX020306NY	100
	8	TX020308	TX020308BK	TX020308NY	100
	10	TX020310	TX020310BK	TX020310NY	100
	12	TX020312	TX020312BK	TX020312NY	100
	16	TX020316	TX020316BK	TX020316NY	100
	20	TX020320	TX020320BK	TX020320NY	100
M4	8	TX020408	TX020408BK	TX020408NY	100
	10	TX020410	TX020410BK	TX020410NY	100
	12	TX020412	TX020412BK	TX020412NY	100
	16	TX020416	TX020416BK	TX020416NY	100
	20	TX020420	TX020420BK	TX020420NY	100
	25	TX020425	TX020425BK	TX020425NY	100
M5	10	TX020510	TX020510BK	TX020510NY	100
	12	TX020512	TX020512BK	TX020512NY	100
	16	TX020516	TX020516BK	TX020516NY	100
	20	TX020520	TX020520BK	TX020520NY	100
	25	TX020525	TX020525BK	TX020525NY	100
	30	TX020530	TX020530BK	TX020530NY	100
M6	10	TX020610	TX020610BK	TX020610NY	100
	12	TX020612	TX020612BK	TX020612NY	100
	16	TX020616	TX020616BK	TX020616NY	100
	20	TX020620	TX020620BK	TX020620NY	100
	25	TX020625	TX020625BK	TX020625NY	100
	30	TX020630	TX020630BK	TX020630NY	100
M8	16	TX020816	TX020816BK	TX020816NY	100
	20	TX020820	TX020820BK	TX020820NY	100
	25	TX020825	TX020825BK	TX020825NY	100
	30	TX020830	TX020830BK	TX020830NY	100
	40	TX020840	TX020840BK	TX020840NY	100
	50	TX020850	TX020850BK	TX020850NY	100

SIZE	PART #			Pkg q'ty	
	d	L	S.S. A2		
#6-32	1/2	TX02.00632.040	TX0200632040BK	TX0200632040NY	100
	3/4	TX02.00632.060	TX0200632060BK	TX0200632060NY	100
	1	TX02.00632.100	TX0200632100BK	TX0200632100NY	100
#10-24	1/2	TX02.01024.040	TX0201024040BK	TX0201024040NY	100
	3/4	TX02.01024.060	TX0201024060BK	TX0201024060NY	100
	1	TX02.01024.100	TX0201024100BK	TX0201024100NY	100
#10-32	1-1/4	TX02.01024.120	TX0201024120BK	TX0201024120NY	100
	1-1/2	TX02.01024.140	TX0201024140BK	TX0201024140NY	100
	1/2	TX02.01032.040	TX0201032040BK	TX0201032040NY	100
1/4-20	3/4	TX02.01032.060	TX0201032060BK	TX0201032060NY	100
	1	TX02.01032.100	TX0201032100BK	TX0201032100NY	100
	1-1/2	TX02.01032.140	TX0201032140BK	TX0201032140NY	100

**Nylok®**

- Exceptional vibration resistance
- Reusable
- Applicable to any head configuration
- Environmentally friendly
- Cost effective

### PIN BUTTON 6-LOBE TAPPING SCREWS



- Material
  - Stainless Steel A2
  - Stainless Steel A2 + Blacken
- Thread
  - Type AB

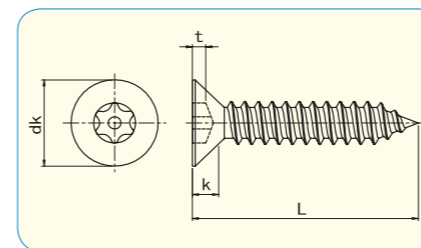


	3.5	4.2	4.8
dk	6.66	7.93	9.17
k	1.86	2.21	2.57
Drive Size	T10	T15	T25

SIZE	PART #		Pkg q'ty	
	d	L		
3.5	13	TX033513	TX033513BK	100
	20	TX033520	TX033520BK	100
	25	TX033525	TX033525BK	100
	38	TX033538	TX033538BK	100
4.2	13	TX034213	TX034213BK	100
	20	TX034220	TX034220BK	100
	25	TX034225	TX034225BK	100
	32	TX034232	TX034232BK	100
4.8	13	TX034813	TX034813BK	100
	20	TX034820	TX034820BK	100
	25	TX034825	TX034825BK	100
	32	TX034832	TX034832BK	100



### PIN FLAT 6-LOBE TAPPING SCREWS



- Material
  - Stainless Steel A2
  - Stainless Steel A2 + Blacken
- Thread
  - Type AB



	3.5	4.2	4.8
dk	7.8	9.12	10.44
k	2.47	2.85	3.23
Drive Size	T15	T20	T25

SIZE	PART #		Pkg q'ty	
	d	L		
3.5	13	TX043513	TX043513BK	100
	20	TX043520	TX043520BK	100
	25	TX043525	TX043525BK	100
	38	TX043538	TX043538BK	100
4.2	13	TX044213	TX044213BK	100
	20	TX044220	TX044220BK	100
	25	TX044225	TX044225BK	100
	32	TX044232	TX044232BK	100
4.8	13	TX044813	TX044813BK	100
	20	TX044820	TX044820BK	100
	25	TX044825	TX044825BK	100
	32	TX044832	TX044832BK	100

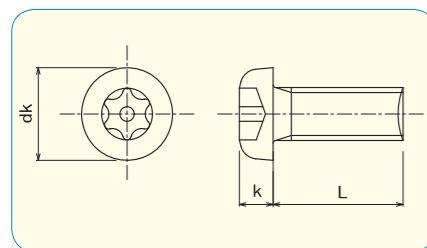


Please see page 40-41 for tools.

Please see page 40-41 for tools.



### PIN-PAN 6-LOBE MACHINE SCREWS



	M3	M4	M5	M6
dk	5.5	7	9	10.5
k	2	2.6	3.3	3.9
Drive Size	T10	T20	T25	T30



Material - plating  
Steel / Zinc 3Cr. Plated

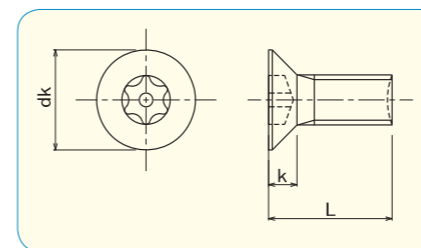
SIZE	PART #		Pkg q'ty
	d	L	
M2	3	TX110203ZP3	100
	4	TX110204ZP3	100
	5	TX110205ZP3	100
	6	TX110206ZP3	100
	8	TX110208ZP3	100
	10	TX110210ZP3	100
M3	12	TX110212ZP3	100
	5	TX110305ZP3	100
	6	TX110306ZP3	100
	8	TX110308ZP3	100
	10	TX110310ZP3	100
	12	TX110312ZP3	100
	15	TX110315ZP3	100
	16	TX110316ZP3	100
M4	18	TX110318ZP3	100
	20	TX110320ZP3	100
	6	TX110406ZP3	100
	8	TX110408ZP3	100
	10	TX110410ZP3	100
	12	TX110412ZP3	100
	15	TX110415ZP3	100
	16	TX110416ZP3	100
M5	20	TX110420ZP3	100
	30	TX110430ZP3	100
	8	TX110508ZP3	100
	10	TX110510ZP3	100
	12	TX110512ZP3	100
	15	TX110515ZP3	100
	16	TX110516ZP3	100
	20	TX110520ZP3	100
M6	25	TX110525ZP3	100
	30	TX110530ZP3	100
	8	TX110608ZP3	100
	10	TX110610ZP3	100
	12	TX110612ZP3	100
	15	TX110615ZP3	100
	16	TX110616ZP3	100
	20	TX110620ZP3	100
M8	25	TX110625ZP3	100
	30	TX110630ZP3	100
	12	TX110812ZP3	100
	14	TX110814ZP3	100
	16	TX110816ZP3	100
	20	TX110820ZP3	100
	25	TX110825ZP3	100
	30	TX110830ZP3	100

Material - plating  
Steel / Zinc Black 3Cr. Plated

SIZE	PART #		Pkg q'ty
	d	L	
M3	5	TX110305ZB3	100
	6	TX110306ZB3	100
	8	TX110308ZB3	100
	10	TX110310ZB3	100
	12	TX110312ZB3	100
	15	TX110315ZB3	100
M4	16	TX110316ZB3	100
	18	TX110318ZB3	100
	20	TX110320ZB3	100
	6	TX110406ZB3	100
	8	TX110408ZB3	100
	10	TX110410ZB3	100
	12	TX110412ZB3	100
	15	TX110415ZB3	100
M5	16	TX110416ZB3	100
	20	TX110420ZB3	100
	25	TX110425ZB3	100
	30	TX110430ZB3	100
	8	TX110508ZB3	100
	10	TX110510ZB3	100
	12	TX110512ZB3	100
	15	TX110515ZB3	100
M6	16	TX110516ZB3	100
	20	TX110520ZB3	100
	25	TX110525ZB3	100
	8	TX110608ZB3	100
	10	TX110610ZB3	100
	12	TX110612ZB3	100
	15	TX110615ZB3	100
	16	TX110616ZB3	100
M8	18	TX110618ZB3	100
	20	TX110620ZB3	100
	25	TX110625ZB3	100
	30	TX110630ZB3	100
	12	TX110812ZB3	100
	16	TX110816ZB3	100
	20	TX110820ZB3	100
	25	TX110825ZB3	100
30	TX110830ZB3	100	



### PIN-FLAT 6-LOBE MACHINE SCREWS



	M2.6	M3	M4	M5	M6
dk	5.2	6	8	10	12
k	1.5	1.75	2.3	2.8	3.4
Drive Size	T8	T10	T20	T25	T30

Material - plating  
Steel / Zinc 3Cr. Plated

SIZE	PART #		Pkg q'ty
	d	L	
M2.6	4	TX122604ZP3	100
	5	TX122605ZP3	100
	6	TX122606ZP3	100
	8	TX122608ZP3	100
	10	TX122610ZP3	100
	12	TX122612ZP3	100
M3	5	TX120305ZP3	100
	6	TX120306ZP3	100
	8	TX120308ZP3	100
	10	TX120310ZP3	100
	12	TX120312ZP3	100
	15	TX120315ZP3	100
M4	18	TX120318ZP3	100
	8	TX120408ZP3	100
	10	TX120410ZP3	100
	12	TX120412ZP3	100
	16	TX120416ZP3	100
	20	TX120420ZP3	100
M5	10	TX120510ZP3	100
	12	TX120512ZP3	100
	15	TX120515ZP3	100
	16	TX120516ZP3	100
	20	TX120520ZP3	100
	25	TX120525ZP3	100
M6	12	TX120612ZP3	100
	15	TX120615ZP3	100
	20	TX120620ZP3	100
	30	TX120630ZP3	100
	12	TX120812ZP3	100
	16	TX120816ZP3	100
M8	20	TX120820ZP3	100
	25	TX120825ZP3	100
	30	TX120830ZP3	100

Material - plating  
Steel / Zinc Black 3Cr. Plated

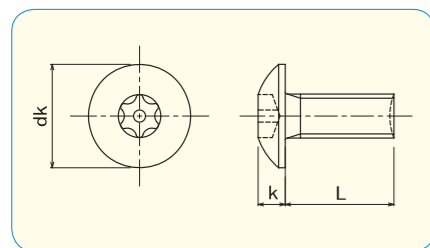
SIZE	PART #		Pkg q'ty
	d	L	
M2.6	4	TX122604ZB3	100
	5	TX122605ZB3	100
	6	TX122606ZB3	100
	8	TX122608ZB3	100
	10	TX122610ZB3	100
	12	TX122612ZB3	100
M3	5	TX120305ZB3	100
	6	TX120306ZB3	100
	8	TX120308ZB3	100
	10	TX120310ZB3	100
	12	TX120312ZB3	100
	15	TX120315ZB3	100
M4	18	TX120318ZB3	100
	8	TX120408ZB3	100
	10	TX120410ZB3	100
	12	TX120412ZB3	100
	20	TX120420ZB3	100
	M5	10	TX120510ZB3
12		TX120512ZB3	100
15		TX120515ZB3	100
16		TX120516ZB3	100
20		TX120520ZB3	100
25		TX120525ZB3	100
M6	12	TX120612ZB3	100
	15	TX120615ZB3	100
	20	TX120620ZB3	100
	30	TX120630ZB3	100
	12	TX120812ZB3	100
	16	TX120816ZB3	100
M8	20	TX120820ZB3	100
	25	TX120825ZB3	100
	30	TX120830ZB3	100



Please see page 40-41 for tools.

Please see page 40-41 for tools.

**PIN-TRUSS 6-LOBE MACHINE SCREWS**



	M2.6	M3	M4	M5	M6
dk	5.9	6.9	9.4	11.8	14
k	1.6	1.9	2.5	3.1	3.7
Drive Size	T8	T10	T20	T25	T30



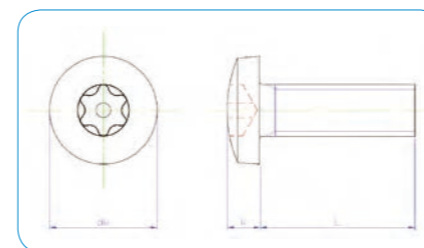
● **Material · plating**  
Steel / Zinc 3Cr. Plated

SIZE	PART #		Pkg q'ty
	d	L	
M2.6	3	TX132603ZP3	100
	5	TX132605ZP3	100
M3	5	TX130305ZP3	100
	6	TX130306ZP3	100
	8	TX130308ZP3	100
	10	TX130310ZP3	100
	12	TX130312ZP3	100
	15	TX130315ZP3	100
M4	16	TX130316ZP3	100
	20	TX130320ZP3	100
	5	TX130405ZP3	100
	6	TX130406ZP3	100
	8	TX130408ZP3	100
	10	TX130410ZP3	100
	12	TX130412ZP3	100
	15	TX130415ZP3	100
M5	16	TX130416ZP3	100
	18	TX130418ZP3	100
	20	TX130420ZP3	100
	25	TX130425ZP3	100
	30	TX130430ZP3	100
	35	TX130435ZP3	100
	8	TX130508ZP3	100
	10	TX130510ZP3	100
	12	TX130512ZP3	100
	15	TX130515ZP3	100
M6	16	TX130616ZP3	100
	20	TX130620ZP3	100
	25	TX130625ZP3	100
	30	TX130630ZP3	100

● **Material · plating**  
Steel / Zinc Black 3Cr. Plated

SIZE	PART #		Pkg q'ty
	d	L	
M2.6	3	TX132603ZB3	100
	5	TX132605ZB3	100
M3	5	TX130305ZB3	100
	6	TX130306ZB3	100
	8	TX130308ZB3	100
	10	TX130310ZB3	100
	12	TX130312ZB3	100
	15	TX130315ZB3	100
M4	16	TX130316ZB3	100
	20	TX130320ZB3	100
	6	TX130406ZB3	100
	8	TX130408ZB3	100
	10	TX130410ZB3	100
	12	TX130412ZB3	100
	15	TX130415ZB3	100
	16	TX130416ZB3	100
M5	18	TX130418ZB3	100
	20	TX130420ZB3	100
	25	TX130425ZB3	100
	30	TX130430ZB3	100
	35	TX130435ZB3	100
	8	TX130508ZB3	100
	10	TX130510ZB3	100
	12	TX130512ZB3	100
	15	TX130515ZB3	100
	16	TX130516ZB3	100
M6	20	TX130520ZB3	100
	25	TX130525ZB3	100
	30	TX130530ZB3	100
	8	TX130608ZB3	100
	10	TX130610ZB3	100
	12	TX130612ZB3	100

**PIN-BINDING 6-LOBE MACHINE SCREWS**



	M3	M4	M5	M6
dk	6.3	8.3	10.3	12.4
k	1.3	1.7	2.1	2.4
Drive Size	T10	T20	T25	T30

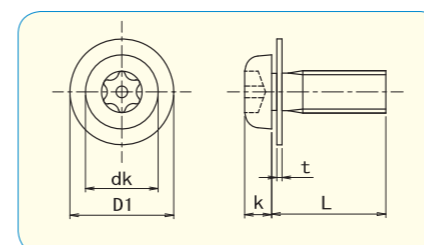
● **Material · plating**  
Steel / Zinc 3Cr. Plated

SIZE	PART #		Pkg q'ty
	d	L	
M3	5	TX140305ZP3	100
	6	TX140306ZP3	100
	8	TX140308ZP3	100
	10	TX140310ZP3	100
M4	6	TX140406ZP3	100
	8	TX140408ZP3	100
	10	TX140410ZP3	100
	12	TX140412ZP3	100
M5	8	TX140508ZP3	100
	10	TX140510ZP3	100
M6	10	TX140610ZP3	100

● **Material · plating**  
Steel / Zinc Black 3Cr. Plated

SIZE	PART #		Pkg q'ty
	d	L	
M3	5	TX140305ZB3	100
	6	TX140306ZB3	100
	8	TX140308ZB3	100
	10	TX140310ZB3	100
M4	6	TX140406ZB3	100
	8	TX140408ZB3	100
	10	TX140410ZB3	100
	12	TX140412ZB3	100
M5	8	TX140508ZB3	100
	10	TX140510ZB3	100
M6	10	TX140610ZB3	100

**PIN-PAN 6-LOBE MACHINE SCREWS assembled with flat washer**



● **Material**  
Stainless Steel A2



	M3	M4	M6
dk	5.5	7	10.5
k	2	2.6	3.9
D1	8	10	13
t	0.5	0.8	1.0
Drive Size	T10	T20	T30

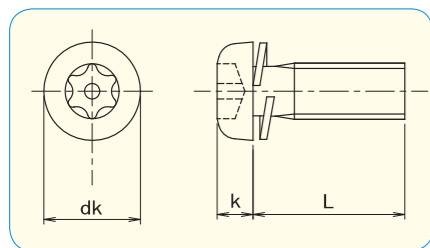
SIZE	PART #		Pkg q'ty
	d	L	
M3	6	TX210306	100
	8	TX210308	100
	10	TX210310	100
M4	8	TX210408	100
	10	TX210410	100
	12	TX210412	100
	14	TX210414	100
M6	10	TX210610	100
	12	TX210612	100

Please see page 40-41 for tools.

Please see page 40-41 for tools.



**PIN-PAN 6-LOBE MACHINE SCREWS assembled with spring washer**



•Material  
Stainless Steel A2

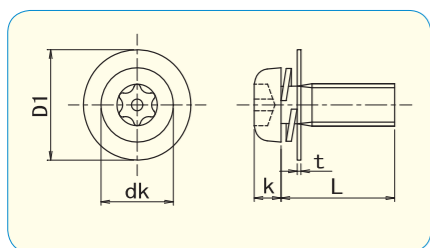


	M3	M4	M5	M6
dk	5.5	7	9	10.5
k	2	2.6	3.3	3.9
Drive Size	T10	T20	T25	T30

SIZE	PART #		Pkg q'ty
	d	L	
M3	6	TX220306	100
	8	TX220308	100
	10	TX220310	100
	12	TX220312	100
M4	6	TX220406	100
	8	TX220408	100
	10	TX220410	100
	12	TX220412	100
	15	TX220415	100
M5	8	TX220508	100
	10	TX220510	100
	12	TX220512	100
	16	TX220516	100
M6	15	TX220615	100
	20	TX220620	100

Please see page 40-41 for tools.

**PIN-PAN 6-LOBE MACHINE SCREWS assembled with flat & spring washer**



•Material  
Stainless Steel A2

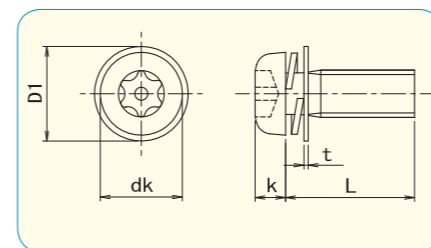


	M3	M4	M5	M6
dk	5.5	7	9	10.5
k	2	2.6	3.3	3.9
D1	8	10	12	13
t	0.5	0.8	0.8	1.0
Drive Size	T10	T20	T25	T30

SIZE	PART #		Pkg q'ty
	d	L	
M3	6	TX230306	100
	8	TX230308	100
	10	TX230310	100
	12	TX230312	100
M4	6	TX230406	100
	8	TX230408	100
	10	TX230410	100
	12	TX230412	100
	15	TX230415	100
	16	TX230416	100
	18	TX230418	100
	20	TX230420	100
	25	TX230425	100
	30	TX230430	100
M5	8	TX230508	100
	10	TX230510	100
	12	TX230512	100
	15	TX230515	100
	16	TX230516	100
M6	14	TX230614	100
	15	TX230615	100
	20	TX230620	100

Please see page 40-41 for tools.

**PIN-PAN 6-LOBE MACHINE SCREWS assembled with small flat & spring washer**



•Material  
Stainless Steel A2



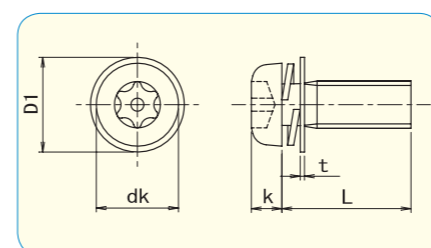
	M3	M4	M5	M6
dk	5.5	7	9	10.5
k	2	2.6	3.3	3.9
D1	6	8	10	11.5
t	0.5	0.5	0.8	0.8
Drive Size	T10	T20	T25	T30



SIZE	PART #		Pkg q'ty
	d	L	
M3	6	TX240306	100
	8	TX240308	100
	10	TX240310	100
	12	TX240312	100
M4	8	TX240408	100
	10	TX240410	100
	12	TX240412	100
	15	TX240415	100
M6	16	TX240416	100

SIZE	PART #		Pkg q'ty
	d	L	
M5	10	TX240510	100
	12	TX240512	100
	16	TX240516	100
M6	15	TX240615	100
	16	TX240616	100
	20	TX240620	100
	25	TX240625	100

**PIN-PAN 6-LOBE MACHINE SCREWS assembled with spring+round washer**



•Material · plating  
Steel / Zinc 3Cr. Plated  
Steel / Zinc 3Cr. Plated + Nylok



	M2	M2.6	M3	M4
dk	3.5	4.5	5.5	7
k	1.3	1.7	2	2.6
round washer size	5 x 0.3	6.5 x 0.5	7 x 0.5	9 x 0.8
Drive Size	T6	T8	T10	T20



SIZE	PART #		Pkg q'ty
	d	L	
M2	5	TX250205ZP3	100
	6	TX250206ZP3	100
	8	TX250208ZP3	100
M2.6	5	TX252605ZP3	100
	6	TX252606ZP3	100
	8	TX252608ZP3	100

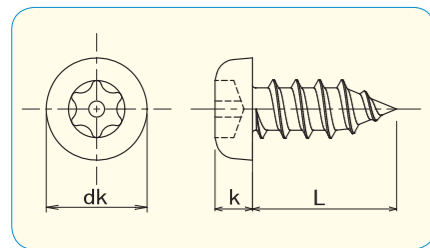
SIZE	PART #		Pkg q'ty
	d	L	
M3	6	TX250306ZP3	100
	8	TX250308ZP3	100
	10	TX250310ZP3	100
M4	8	TX250408ZP3	100
	10	TX250410ZP3	100
	12	TX250412ZP3	100

Please see page 40-41 for tools.

EL  
BK  
HE  
LP  
TX  
SP  
OW  
TW  
SF  
SS  
PH  
TC  
NR  
TOOLS / Order Made

EL  
BK  
HE  
LP  
TX  
SP  
OW  
TW  
SF  
SS  
PH  
TC  
NR  
TOOLS / Order Made

**PIN-PAN 6-LOBE TAPPING SCREWS type A**



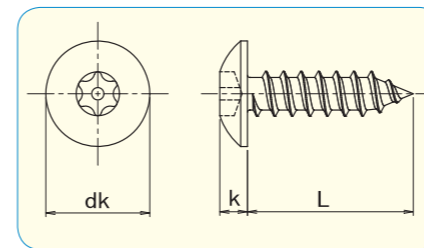
- **Material**  
Stainless Steel A2
- **Thread**  
Type A



	4
dk	7
k	2.6
Drive Size	T20

SIZE		PART #	Pkg q'ty
d	L		
4	8	TX310408	100
	10	TX310410	100
	12	TX310412	100
	16	TX310416	100
	20	TX310420	100
	25	TX310425	100
	30	TX310430	100

**PIN-TRUSS 6-LOBE TAPPING SCREWS type A**



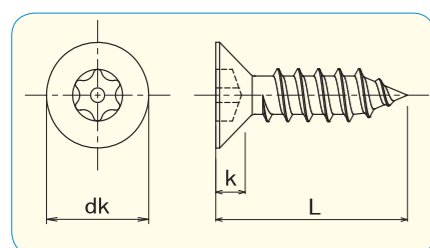
- **Material**  
Stainless Steel A2
- **Thread**  
Type A



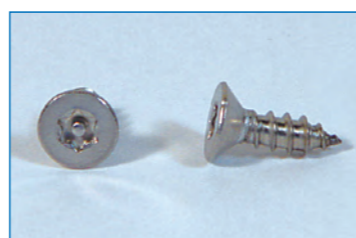
	4
dk	9.4
k	2.5
Drive Size	T20

SIZE		PART #	Pkg q'ty
d	L		
4	8	TX330408	100
	10	TX330410	100
	12	TX330412	100
	16	TX330416	100
	20	TX330420	100
	25	TX330425	100
	30	TX330430	100

**PIN-FLAT 6-LOBE TAPPING SCREWS type A**



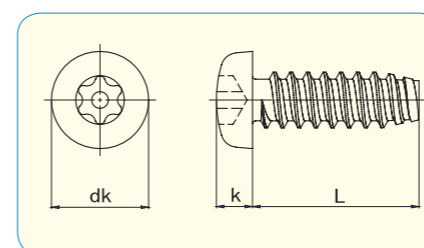
- **Material**  
Stainless Steel A2
- **Thread**  
Type A



	4
dk	8
k	2.3
Drive Size	T20

SIZE		PART #	Pkg q'ty
d	L		
4	8	TX320408	100
	10	TX320410	100
	12	TX320412	100
	16	TX320416	100
	20	TX320420	100
	25	TX320425	100
	30	TX320430	100

**PIN-PAN HEAD 6-LOBE THREAD FORMING SCREWS type B**



- **Material · plating**  
Steel / Zinc 3Cr. Plated
- **Thread**  
Type B



	2	2.6	3	4
dk	3.5	4.5	5.5	7
k	1.3	1.7	2	2.6
Drive Size	T6	T8	T10	T20

SIZE		PART #	Pkgx q'ty
d	L		
2	4	TX340204ZP3	100
	5	TX340205ZP3	100
	6	TX340206ZP3	100
	8	TX340208ZP3	100
2.6	5	TX342605ZP3	100
	6	TX342606ZP3	100
	8	TX342608ZP3	100
	10	TX342610ZP3	100

SIZE		PART #	Pkg q'ty
d	L		
3	6	TX340306ZP3	100
	8	TX340308ZP3	100
	10	TX340310ZP3	100
	12	TX340312ZP3	100
4	8	TX340408ZP3	100
	10	TX340410ZP3	100
	12	TX340412ZP3	100
	14	TX340414ZP3	100

Please see page 40-41 for tools.

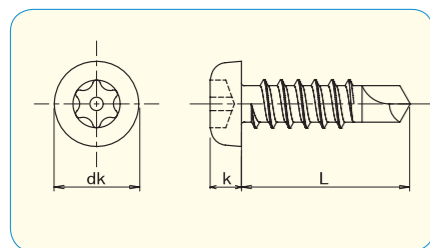
Please see page 40-41 for tools.

EL  
BK  
HE  
LP  
TX  
SP  
OW  
TW  
SF  
SS  
PH  
TC  
NR  
TOOLS / Order Made

EL  
BK  
HE  
LP  
TX  
SP  
OW  
TW  
SF  
SS  
PH  
TC  
NR  
TOOLS / Order Made



### PIN-PAN HEAD 6-LOBE SELF DRILL SCREWS



●Material  
410 Stainless Steel

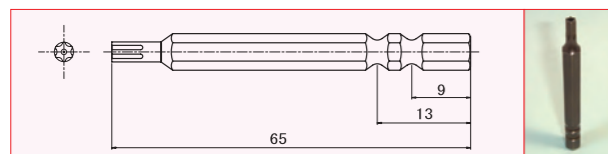


	4
dk	8.17
k	2.92
Drive Size	T20



SIZE	PART #		Pkg q'ty
	d	L	
4.2	13	TX050413	1,500
	16	TX050416	1,300
	19	TX050419	1,000

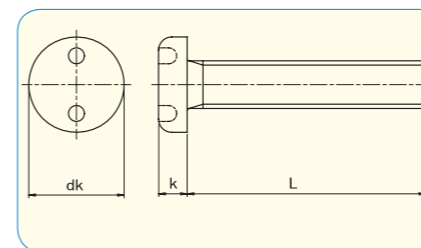
### 6-LOBE BIT for TRF



SIZE	PART #	Pkg q'ty	Remark	HEX SHANK SIZE
T20	TX20B65	1	4	6.35

Please see page 40-41 for tools.

### 2 HOLE PAN HEAD MACHINE SCREWS



●Material  
Stainless Steel A2  
Stainless Steel A2 + Blacken  
Stainless Steel A2 + Nylok



	M3	M4	M5	M6
dk	6	8	10	12
k	1.8	2.4	3	3.6
Drive Size	#4	#8	#10	#14



SIZE	PART #			Pkg q'ty	
	d	L			
M3	6	SP010306	SP010306BK	SP010306NY	100
	8	SP010308	SP010308BK	SP010308NY	100
	10	SP010310	SP010310BK	SP010310NY	100
	12	SP010312	SP010312BK	SP010312NY	100
	16	SP010316	SP010316BK	SP010316NY	100
	20	SP010320	SP010320BK	SP010320NY	100
M4	10	SP010410	SP010410BK	SP010410NY	100
	12	SP010412	SP010412BK	SP010412NY	100
	16	SP010416	SP010416BK	SP010416NY	100
	20	SP010420	SP010420BK	SP010420NY	100
	25	SP010425	SP010425BK	SP010425NY	100
M5	12	SP010512	SP010512BK	SP010512NY	100
	16	SP010516	SP010516BK	SP010516NY	100
	20	SP010520	SP010520BK	SP010520NY	100
	25	SP010525	SP010525BK	SP010525NY	100
M6	12	SP010612	SP010612BK	SP010612NY	100
	16	SP010616	SP010616BK	SP010616NY	100
	20	SP010620	SP010620BK	SP010620NY	100
	25	SP010625	SP010625BK	SP010625NY	100
	30	SP010630	SP010630BK	SP010630NY	100
	40	SP010640	SP010640BK	SP010640NY	100

### Nylok®

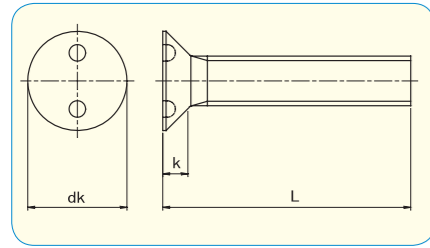
- Exceptional vibration resistance
- Reusable
- Applicable to any head configuration
- Environmentally friendly
- Cost effective

Please see page 40-41 for tools.

EL  
BK  
HE  
LP  
TX  
SP  
OW  
TW  
SF  
SS  
PH  
TC  
NR  
TOOLS / Order Made

EL  
BK  
HE  
LP  
TX  
SP  
OW  
TW  
SF  
SS  
PH  
TC  
NR  
TOOLS / Order Made

## 2 HOLE FLAT HEAD MACHINE SCREWS



- Material  
Stainless Steel A2  
Stainless Steel A2 + Blacken  
Stainless Steel A2 + Nylok



	M3	M4	M5	M6
dk	5.6	7.5	9.2	11
k	1.65	2.2	2.5	3
Drive Size	#4	#8	#10	#14



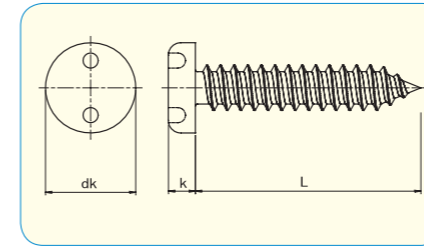
SIZE	PART #			Pkg q'ty	
	d	L			
M3	6	SP020306	SP020306BK	SP020306NY	100
	8	SP020308	SP020308BK	SP020308NY	100
	10	SP020310	SP020310BK	SP020310NY	100
	12	SP020312	SP020312BK	SP020312NY	100
	16	SP020316	SP020316BK	SP020316NY	100
	30	SP020330	SP020330BK	SP020330NY	100
M4	10	SP020410	SP020410BK	SP020410NY	100
	12	SP020412	SP020412BK	SP020412NY	100
	16	SP020416	SP020416BK	SP020416NY	100
	20	SP020420	SP020420BK	SP020420NY	100
	25	SP020425	SP020425BK	SP020425NY	100
	35	SP020435	SP020435BK	SP020435NY	100
M5	12	SP020512	SP020512BK	SP020512NY	100
	16	SP020516	SP020516BK	SP020516NY	100
	20	SP020520	SP020520BK	SP020520NY	100
	25	SP020525	SP020525BK	SP020525NY	100
	30	SP020530	SP020530BK	SP020530NY	100
	35	SP020535	SP020535BK	SP020535NY	100
M6	12	SP020612	SP020612BK	SP020612NY	100
	20	SP020620	SP020620BK	SP020620NY	100
	25	SP020625	SP020625BK	SP020625NY	100
	30	SP020630	SP020630BK	SP020630NY	100
	40	SP020640	SP020640BK	SP020640NY	100

**Nylok®**

- Exceptional vibration resistance
- Reusable
- Applicable to any head configuration
- Environmentally friendly
- Cost effective

Please see page 40-41 for tools.

## 2 HOLE PAN HEAD TAPPING SCREWS



- Material  
Stainless Steel A2  
Stainless Steel A2 + Blacken
- Thread  
Type AB



	3.5	4.2	4.8
dk	6.86	8.18	9.48
k	2.4	3	3.6
Drive Size	#6	#8	#10



SIZE	PART #		Pkg q'ty	
	d	L		
3.5	10	SP033510	SP033510BK	100
	13	SP033513	SP033513BK	100
	16	SP033516	SP033516BK	100
	20	SP033520	SP033520BK	100
	25	SP033525	SP033525BK	100
	32	SP033532	SP033532BK	100
4.2	10	SP034210	SP034210BK	100
	13	SP034213	SP034213BK	100
	16	SP034216	SP034216BK	100
	20	SP034220	SP034220BK	100
	25	SP034225	SP034225BK	100
	32	SP034232	SP034232BK	100
4.8	10	SP034810	SP034810BK	100
	13	SP034813	SP034813BK	100
	16	SP034816	SP034816BK	100
	20	SP034820	SP034820BK	100
	25	SP034825	SP034825BK	100
	32	SP034832	SP034832BK	100
	38	SP034838	SP034838BK	100
	50	SP034850	SP034850BK	100
	63	SP034863	SP034863BK	100

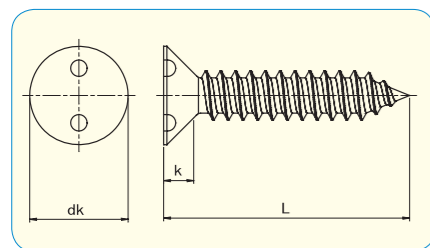
Please see page 40-41 for tools.

EL  
BK  
HE  
LP  
TX  
SP  
OW  
TW  
SF  
SS  
PH  
TC  
NR  
TOOLS / Order Made

EL  
BK  
HE  
LP  
TX  
SP  
OW  
TW  
SF  
SS  
PH  
TC  
NR  
TOOLS / Order Made



## 2 HOLE FLAT HEAD TAPPING SCREWS



- **Material**  
Stainless Steel A2  
Stainless Steel A2 + Blacken
- **Thread**  
Type AB

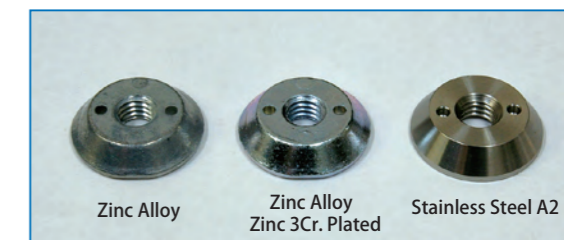
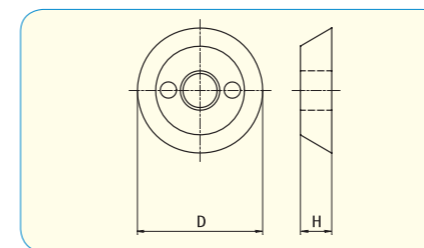


	3.5	4.2	4.8
dk	7.09	8.44	9.78
k	2.11	2.54	2.95
Drive Size	#6	#8	#10



SIZE	PART #		Pkg q'ty	
	d	L		
3.5	10	SP043510	SP043510BK	100
	13	SP043513	SP043513BK	100
	16	SP043516	SP043516BK	100
	20	SP043520	SP043520BK	100
	25	SP043525	SP043525BK	100
	32	SP043532	SP043532BK	100
	38	SP043538	SP043538BK	100
4.2	10	SP044210	SP044210BK	100
	13	SP044213	SP044213BK	100
	16	SP044216	SP044216BK	100
	20	SP044220	SP044220BK	100
	25	SP044225	SP044225BK	100
	32	SP044232	SP044232BK	100
	38	SP044238	SP044238BK	100
4.8	10	SP044810	SP044810BK	100
	13	SP044813	SP044813BK	100
	16	SP044816	SP044816BK	100
	20	SP044820	SP044820BK	100
	25	SP044825	SP044825BK	100
	32	SP044832	SP044832BK	100
	38	SP044838	SP044838BK	100
	50	SP044850	SP044850BK	100
	63	SP044863	SP044863BK	100

## 2 HOLE NUT



	M6	M8	M10
H	6.35	6.35	6.35
D	25.4	25.4	25.4
Bit Part#	SPNUTB		



- **Material**  
Zinc Alloy

SIZE	PART #	Pkg q'ty
M6	SPNUT06	100
M8	SPNUT08	100
M10	SPNUT10	100

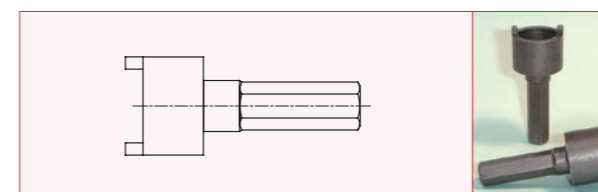
- **Material . plating**  
Zinc Alloy / Zinc 3Cr. Plated

SIZE	PART #	Pkg q'ty
M6	SPNZP306	100
M8	SPNZP308	100
M10	SPNZP310	100

- **Material**  
Stainless Steel A2

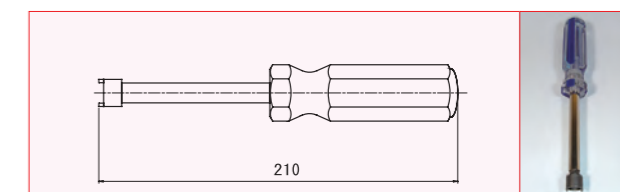
SIZE	PART #	Pkg q'ty
M6	SPNUT06A2	100
M8	SPNUT08A2	100
M10	SPNUT10A2	100

## 2 HOLE NUT BIT



PART #	HEX SHANK SIZE	Pkg q'ty	Remark
SPNUTB	6.35	1	M6,8,10

## 2 HOLE NUT DRIVER

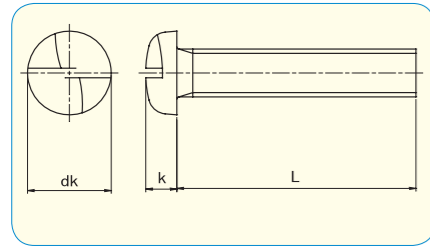


PART #	Pkg q'ty	Remark
SPNUTDR	1	M6,8,10

Please see page 40-41 for tools.

Please see page 40-41 for tools.

## ONE-SIDE PAN HEAD MACHINE SCREWS



- Material  
Stainless Steel A2  
Stainless Steel A2 + Blacken  
Stainless Steel A2 + Nylok



	M3	M4	M5	M6
dk	5.5	7	9	10.5
k	2	2.6	3.3	3.9
Removal tool #	410	410	510	610



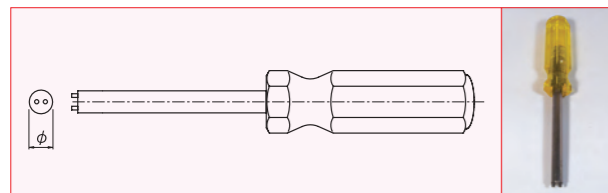
SIZE	PART #			Pkg q'ty	
	d	L			
M3	5	OW010305	OW010305BK	OW010305NY	100
	6	OW010306	OW010306BK	OW010306NY	100
	8	OW010308	OW010308BK	OW010308NY	100
	10	OW010310	OW010310BK	OW010310NY	100
	12	OW010312	OW010312BK	OW010312NY	100
	16	OW010316	OW010316BK	OW010316NY	100
M4	6	OW010406	OW010406BK	OW010406NY	100
	8	OW010408	OW010408BK	OW010408NY	100
	10	OW010410	OW010410BK	OW010410NY	100
	12	OW010412	OW010412BK	OW010412NY	100
	16	OW010416	OW010416BK	OW010416NY	100
	20	OW010420	OW010420BK	OW010420NY	100
25	OW010425	OW010425BK	OW010425NY	100	

SIZE	PART #			Pkg q'ty	
	d	L			
M5	8	OW010508	OW010508BK	OW010508NY	100
	10	OW010510	OW010510BK	OW010510NY	100
	12	OW010512	OW010512BK	OW010512NY	100
	16	OW010516	OW010516BK	OW010516NY	100
	20	OW010520	OW010520BK	OW010520NY	100
	25	OW010525	OW010525BK	OW010525NY	100
M6	30	OW010530	OW010530BK	OW010530NY	100
	40	OW010540	OW010540BK	OW010540NY	100
	8	OW010608	OW010608BK	OW010608NY	100
	10	OW010610	OW010610BK	OW010610NY	100
	12	OW010612	OW010612BK	OW010612NY	100
	16	OW010616	OW010616BK	OW010616NY	100
20	OW010620	OW010620BK	OW010620NY	100	
25	OW010625	OW010625BK	OW010625NY	100	
30	OW010630	OW010630BK	OW010630NY	100	
40	OW010640	OW010640BK	OW010640NY	100	

**Nylok®**

- Exceptional vibration resistance
- Reusable
- Applicable to any head configuration
- Environmentally friendly
- Cost effective

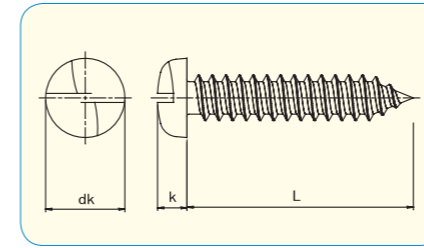
### ONE SIDE REMOVAL TOOL



SIZE	PART #	Pkg q'ty	φ	Remark
#410	OW410	1	φ 8	M3/M4/3.5/4.2
#510	OW510	1	φ 10	M5/4.2/4.8
#610	OW610	1	φ 12	M6

The handle color is subject to change without notice.  
Please see page 40-41 for tools.

## ONE-SIDE ROUND HEAD TAPPING SCREWS



- Material  
Stainless Steel A2  
Stainless Steel A2 + Blacken
- Thread  
Type AB

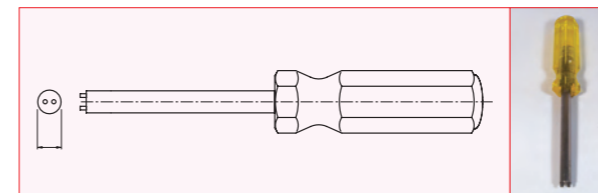


	3.5	4.2	4.8
dk	6.61	7.85	9.12
k	2.62	3.05	3.48
Removal tool #	410	410 / 510	510



SIZE	PART #		Pkg q'ty	
	d	L		
3.5	13	OW013513	OW013513BK	100
	20	OW013520	OW013520BK	100
	25	OW013525	OW013525BK	100
4.2	13	OW014213	OW014213BK	100
	20	OW014220	OW014220BK	100
	25	OW014225	OW014225BK	100
4.8	38	OW014238	OW014238BK	100
	13	OW014813	OW014813BK	100
	20	OW014820	OW014820BK	100
25	OW014825	OW014825BK	100	
38	OW014838	OW014838BK	100	

### ONE SIDE REMOVAL TOOL



SIZE	PART #	Pkg q'ty	φ	Remark
#410	OW410	1	φ 8	M3/M4/3.5/4.2
#510	OW510	1	φ 10	M5/4.2/4.8
#610	OW610	1	φ 12	M6

The handle color is subject to change without notice.  
Please see page 40-41 for tools.

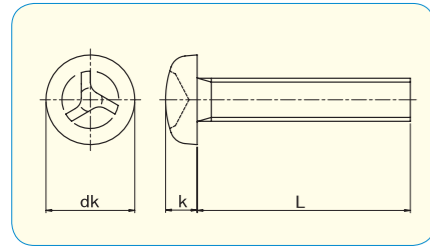
EL  
BK  
HE  
LP  
TX  
SP  
OW  
TW  
SF  
SS  
PH  
TC  
NR  
TOOLS / Order Made

EL  
BK  
HE  
LP  
TX  
SP  
OW  
TW  
SF  
SS  
PH  
TC  
NR  
TOOLS / Order Made





TRI-WING® PAN HEAD MACHINE SCREWS



•Material  
Stainless Steel A2  
Stainless Steel A2 + Blacken  
Stainless Steel A2 + Nylok



	M3	M4	M5	M6	M8
dk	5.6	8.17	9.47	12.49	15.62
k	1.8	2.92	3.37	4.44	5.53
Drive Size	W2	W4	W5	W6	W7

	#6-32	#8-32	#10-24	#10-32
dk	6.9	8.2	9.5	9.5
k	2.5	3	3.4	3.4
Drive Size	W3	W4	W5	W5



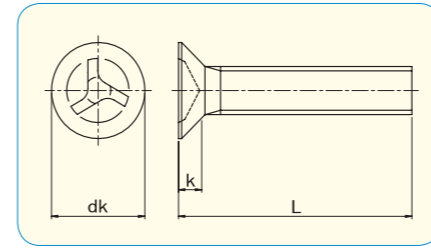
SIZE	PART #			Pkg q'ty
	d	L	S.S. A2 / S.S.A2+Blacken / S.S.A2+Nylok	
M3	6		TW010306 / TW010306BK / TW010306NY	100
	8		TW010308 / TW010308BK / TW010308NY	100
	10		TW010310 / TW010310BK / TW010310NY	100
	12		TW010312 / TW010312BK / TW010312NY	100
	16		TW010316 / TW010316BK / TW010316NY	100
	20		TW010320 / TW010320BK / TW010320NY	100
M4	8		TW010408 / TW010408BK / TW010408NY	100
	10		TW010410 / TW010410BK / TW010410NY	100
	12		TW010412 / TW010412BK / TW010412NY	100
	16		TW010416 / TW010416BK / TW010416NY	100
	20		TW010420 / TW010420BK / TW010420NY	100
	25		TW010425 / TW010425BK / TW010425NY	100
M5	10		TW010510 / TW010510BK / TW010510NY	100
	12		TW010512 / TW010512BK / TW010512NY	100
	16		TW010516 / TW010516BK / TW010516NY	100
	20		TW010520 / TW010520BK / TW010520NY	100
	25		TW010525 / TW010525BK / TW010525NY	100
	30		TW010530 / TW010530BK / TW010530NY	100
M6	10		TW010610 / TW010610BK / TW010610NY	100
	12		TW010612 / TW010612BK / TW010612NY	100
	16		TW010616 / TW010616BK / TW010616NY	100
	20		TW010620 / TW010620BK / TW010620NY	100
	25		TW010625 / TW010625BK / TW010625NY	100
	30		TW010630 / TW010630BK / TW010630NY	100
M8	10		TW010810 / TW010810BK / TW010810NY	100
	12		TW010812 / TW010812BK / TW010812NY	100
	16		TW010816 / TW010816BK / TW010816NY	100
	20		TW010820 / TW010820BK / TW010820NY	100
	25		TW010825 / TW010825BK / TW010825NY	100
	30		TW010830 / TW010830BK / TW010830NY	100

SIZE	PART #			Pkg q'ty
	d	L	S.S. A2 / S.S.A2+Blacken / S.S.A2+Nylok	
#6-32	3/8		TW01.00632.030 / TW0100632030BK / TW0100632030NY	100
	1/2		TW01.00632.040 / TW0100632040BK / TW0100632040NY	100
	3/4		TW01.00632.060 / TW0100632060BK / TW0100632060NY	100
	1		TW01.00632.100 / TW0100632100BK / TW0100632100NY	100
#8-32	3/8		TW01.00832.030 / TW0100832030BK / TW0100832030NY	100
	1/2		TW01.00832.040 / TW0100832040BK / TW0100832040NY	100
	3/4		TW01.00832.060 / TW0100832060BK / TW0100832060NY	100
#10-24	1/2		TW01.01024.040 / TW0101024040BK / TW0101024040NY	100
	1		TW01.01024.100 / TW0101024100BK / TW0101024100NY	100
#10-32	1/2		TW01.01032.040 / TW0101032040BK / TW0101032040NY	100
	3/4		TW01.01032.060 / TW0101032060BK / TW0101032060NY	100

**Nylok®**

- Exceptional vibration resistance
- Reusable
- Applicable to any head configuration
- Environmentally friendly
- Cost effective

TRI-WING® FLAT HEAD MACHINE SCREWS



•Material  
Stainless Steel A2  
Stainless Steel A2 + Blacken  
Stainless Steel A2 + Nylok



	M3	M4	M5	M6	M8
dk	5.5	8.4	9.3	11.3	15.8
k	1.65	2.7	2.7	3.3	4.65
Drive Size	W2	W4	W5	W6	W7



SIZE	PART #			Pkg q'ty
	d	L	S.S. A2 / S.S.A2+Blacken / S.S.A2+Nylok	
M3	6		TW020306 / TW020306BK / TW020306NY	100
	8		TW020308 / TW020308BK / TW020308NY	100
	10		TW020310 / TW020310BK / TW020310NY	100
	12		TW020312 / TW020312BK / TW020312NY	100
	16		TW020316 / TW020316BK / TW020316NY	100
	20		TW020320 / TW020320BK / TW020320NY	100
M4	6		TW020406 / TW020406BK / TW020406NY	100
	8		TW020408 / TW020408BK / TW020408NY	100
	10		TW020410 / TW020410BK / TW020410NY	100
	12		TW020412 / TW020412BK / TW020412NY	100
	16		TW020416 / TW020416BK / TW020416NY	100
	20		TW020420 / TW020420BK / TW020420NY	100
M5	10		TW020510 / TW020510BK / TW020510NY	100
	12		TW020512 / TW020512BK / TW020512NY	100
	16		TW020516 / TW020516BK / TW020516NY	100
	20		TW020520 / TW020520BK / TW020520NY	100
	25		TW020525 / TW020525BK / TW020525NY	100
	30		TW020530 / TW020530BK / TW020530NY	100

SIZE	PART #			Pkg q'ty
	d	L	S.S. A2 / S.S.A2+Blacken / S.S.A2+Nylok	
M6	10		TW020610 / TW020610BK / TW020610NY	100
	12		TW020612 / TW020612BK / TW020612NY	100
	16		TW020616 / TW020616BK / TW020616NY	100
	20		TW020620 / TW020620BK / TW020620NY	100
	25		TW020625 / TW020625BK / TW020625NY	100
	30		TW020630 / TW020630BK / TW020630NY	100
M8	16		TW020816 / TW020816BK / TW020816NY	100
	20		TW020820 / TW020820BK / TW020820NY	100
	25		TW020825 / TW020825BK / TW020825NY	100
	30		TW020830 / TW020830BK / TW020830NY	100
	40		TW020840 / TW020840BK / TW020840NY	100
	50		TW020850 / TW020850BK / TW020850NY	100

**Nylok®**

- Exceptional vibration resistance
- Reusable
- Applicable to any head configuration
- Environmentally friendly
- Cost effective

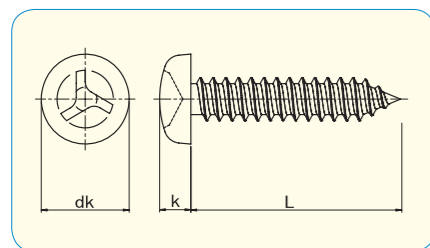
Please see page 40-41 for tools.

TRI-WING® is a registered trademark of Phillips screw Co.

Please see page 40-41 for tools.

TRI-WING® is a registered trademark of Phillips screw Co.

## TRI-WING® PAN HEAD TAPPING SCREWS



- **Material**  
Stainless Steel A2  
Stainless Steel A2 + Blacken
- **Thread**  
Type AB



	3.5	4.2	4.8
dk	6.86	8.18	9.48
k	2.09	2.44	2.8
Drive Size	W3	W4	W5

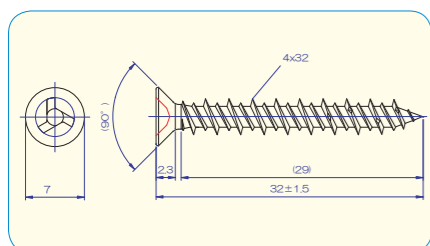


SIZE	PART #		Pkg q'ty
	d	L	
3.5	13	TW033513 TW033513BK	100
	20	TW033520 TW033520BK	100
	25	TW033525 TW033525BK	100
	32	TW033532 TW033532BK	100
	38	TW033538 TW033538BK	100
4.2	13	TW034213 TW034213BK	100
	16	TW034216 TW034216BK	100
	20	TW034220 TW034220BK	100
	25	TW034225 TW034225BK	100
	32	TW034232 TW034232BK	100
4.8	13	TW034813 TW034813BK	100
	20	TW034820 TW034820BK	100
	25	TW034825 TW034825BK	100

## TRI-WING® FLAT HEAD NO-PLUG SCREWS

### NO-PLUG SCREWS for Concrete

- **Features**  
No-PLUG SCREWS are iteal use in concrete without the plastic plugs.  
The thread itself is Hi-Low thread and double start thread.



- **Material**  
Stainless 410 Passivation

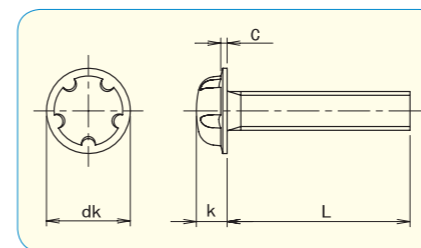


	4
dk	7
k	2.3
Drive Size	W3
Drill dia	3.4

SIZE		PART #	Pkg q'ty
d	L		
4	32	TW620432	100



## SYSTEM 5 MACHINE SCREWS



- **Material**  
Stainless Steel A2  
Stainless Steel A2 + Blacken  
Stainless Steel A2 + Nylok



	M2	M2.3	M2.5	M2.6
dk	4.5	4.5	5.5	5.5
k	1.45	1.45	2.02	2.02
Drive Size	SF2	SF2	SF3	SF3

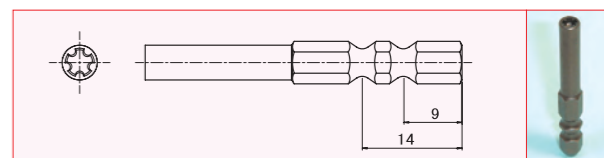


SIZE	PART #			Pkg q'ty
	d	L		
M2	3	SF010203	SF010203BK SF010203NY	100
	4	SF010204	SF010204BK SF010204NY	100
	5	SF010205	SF010205BK SF010205NY	100
	6	SF010206	SF010206BK SF010206NY	100
	8	SF010208	SF010208BK SF010208NY	100
	10	SF010210	SF010210BK SF010210NY	100
	12	SF010212	SF010212BK SF010212NY	100
	16	SF010216	SF010216BK SF010216NY	100
M2.3	3	SF012303	SF012303BK SF012303NY	100
	4	SF012304	SF012304BK SF012304NY	100
	5	SF012305	SF012305BK SF012305NY	100
	6	SF012306	SF012306BK SF012306NY	100
	8	SF012308	SF012308BK SF012308NY	100
	10	SF012310	SF012310BK SF012310NY	100
	12	SF012312	SF012312BK SF012312NY	100
	16	SF012316	SF012316BK SF012316NY	100
M2.5	3	SF012503	SF012503BK SF012503NY	100
	4	SF012504	SF012504BK SF012504NY	100
	5	SF012505	SF012505BK SF012505NY	100
	6	SF012506	SF012506BK SF012506NY	100
	8	SF012508	SF012508BK SF012508NY	100
	10	SF012510	SF012510BK SF012510NY	100
M2.6	3	SF012603	SF012603BK SF012603NY	100
	4	SF012604	SF012604BK SF012604NY	100
	5	SF012605	SF012605BK SF012605NY	100
	6	SF012606	SF012606BK SF012606NY	100
	8	SF012608	SF012608BK SF012608NY	100
	10	SF012610	SF012610BK SF012610NY	100
	12	SF012612	SF012612BK SF012612NY	100
	16	SF012616	SF012616BK SF012616NY	100
	20	SF012620	SF012620BK SF012620NY	100

**Nylok®**

- Exceptional vibration resistance
- Reusable
- Applicable to any head configuration
- Environmentally friendly
- Cost effective

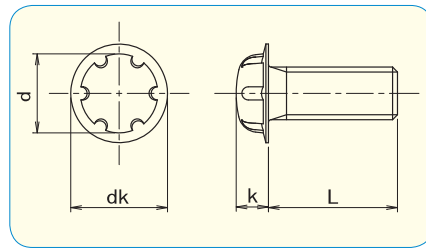
### BIT for SYSTEM 5



SIZE	PART #	Pkg q'ty	Remark	HEX SHANK SIZE
SF2	SF2B	1	M2/M2.3	6.35
SF3	SF3B	1	M2.5/M2.6	6.35



### SYSTEM 6 MACHINE SCREWS



•Material  
Stainless Steel A2



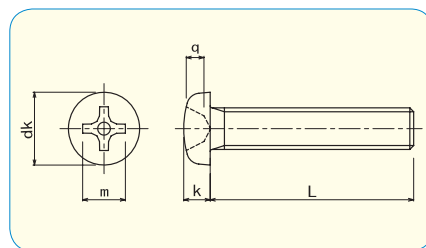
	M3	M4	M5	M6
dk	4.5	6	7.5	9
k	1.6	2.1	2.6	3.1
Drive Size	SS3	SS4	SS5	SS6

SIZE	PART#		Pkg q'ty
	d	L	
M3	6	SS010306	3000
	8	SS010308	2000
	10	SS010310	2000
	12	SS010312	2000
	25	SS010325	1000
M4	6	SS010406	500
	8	SS010408	1000
	10	SS010410	1000
	12	SS010412	1000
	15	SS010415	1000
	20	SS010420	500
	25	SS010425	500
40	SS010440	200	

SIZE	PART#		Pkg q'ty
	d	L	
M5	10	SS010510	500
	12	SS010512	500
	15	SS010515	500
	20	SS010520	400
	25	SS010525	200
M6	30	SS010530	200
	10	SS010610	500
	12	SS010612	500
	15	SS010615	200
	20	SS010620	200
	25	SS010625	200
30	SS010630	200	

Please see page 40-41 for tools.

### PIN-PAN HEAD CROSS RECESS MACHINE SCREWS



•Material · plating  
Steel / Zinc 3Cr. Plated

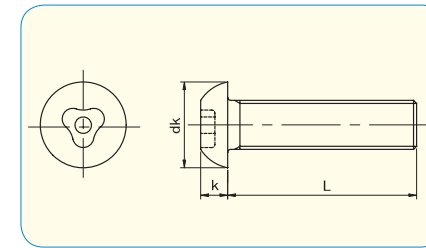


	M3	M4	M5	M6
dk	5.5	7	9	10.5
k	2	2.6	3.3	3.9
Drive Size	#2	#2	#2	#3

SIZE	PART #		Pkg q'ty
	d	L	
M3	6	PH010306	100
	8	PH010308	100
	10	PH010310	100
M4	6	PH010406	100
	10	PH010410	100
	16	PH010416	100
M5	10	PH010510	100
	16	PH010516	100
	20	PH010520	100
M6	10	PH010610	100
	16	PH010616	100
	20	PH010620	100

Please see page 40-41 for tools.

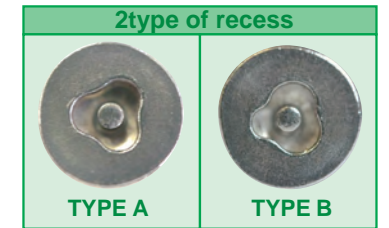
### TRICLE WITH PIN BUTTON BOLT



•Material  
Stainless Steel A2



	M4	M5	M6	M8
dk	7.6	10.5	10.5	14
k	2.2	3.3	3.3	4.4
Drive Size	1	2	2	2.5



•TRICLE -TYPE A-

Stock

SIZE	PART #		Pkg q'ty
	d	L	
M3	6	TC010306A	100
	8	TC010308A	100
	10	TC010310A	100
	12	TC010312A	100
M4	6	TC010406A	100
	8	TC010408A	100
	10	TC010410A	100
	12	TC010412A	100
	16	TC010416A	100
	20	TC010420A	100
M5	25	TC010425A	100
	8	TC010508A	100
	10	TC010510A	100
	12	TC010512A	100
	16	TC010516A	100
	20	TC010520A	100
	25	TC010525A	100
	30	TC010530A	100
M6	40	TC010540A	100
	10	TC010610A	100
	12	TC010612A	100
	16	TC010616A	100
	20	TC010620A	100
	25	TC010625A	100
	30	TC010630A	100
	40	TC010640A	100
	50	TC010650A	100
	M8	12	TC010812A
16		TC010816A	100
20		TC010820A	100
25		TC010825A	100
30		TC010830A	100
40		TC010840A	100
50	TC010850A	100	

•TRICLE -TYPE B-

Built to Order

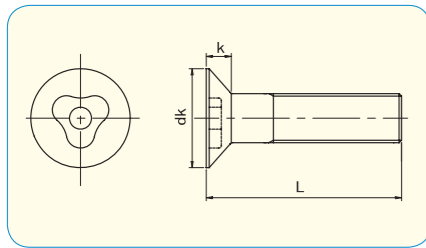
SIZE	PART #	
	d	L
M4	6	TC010406B
	8	TC010408B
	10	TC010410B
	12	TC010412B
	16	TC010416B
M5	20	TC010420B
	25	TC010425B
	8	TC010508B
	10	TC010510B
	12	TC010512B
	16	TC010516B
	20	TC010520B
M6	25	TC010525B
	30	TC010530B
	40	TC010540B
	10	TC010610B
	12	TC010612B
	16	TC010616B
	20	TC010620B
	25	TC010625B
M8	30	TC010630B
	40	TC010640B
	50	TC010650B
	12	TC010812B
	16	TC010816B
	20	TC010820B
25	TC010825B	
30	TC010830B	
40	TC010840B	
50	TC010850B	

Please see page 40-41 for tools.

EL BK HE LP TX SP OW TW SF SS PH TC NR TOOLS / Order Made

EL BK HE LP TX SP OW TW SF SS PH TC NR TOOLS / Order Made

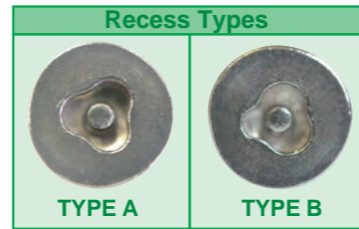
### TRICLE WITH PIN FLAT BOLT



●Material  
Stainless Steel A2



	M4	M5	M6	M8
dk	8	10	12	16
k	2.3	2.8	3.4	4.4
Drive Size	1	2	2	2.5



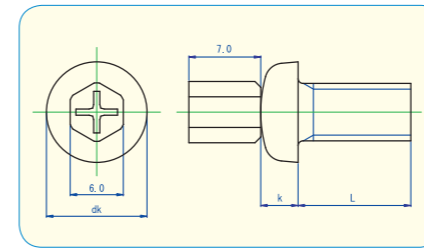
●TRICLE -TYPE A- **Built to Order**

SIZE	PART #	
	d	L
M4	6	TC020406A
	8	TC020408A
	10	TC020410A
	12	TC020412A
	16	TC020416A
M5	20	TC020420A
	25	TC020425A
	8	TC020508A
	10	TC020510A
	12	TC020512A
	16	TC020516A
	20	TC020520A
M6	25	TC020525A
	30	TC020530A
	40	TC020540A
	10	TC020610A
	12	TC020612A
	16	TC020616A
	20	TC020620A
	25	TC020625A
M8	30	TC020630A
	40	TC020640A
	50	TC020650A
	12	TC020812A
	16	TC020816A
M8	20	TC020820A
	25	TC020825A
	30	TC020830A
	40	TC020840A
	50	TC020850A

●TRICLE -TYPE B- **Built to Order**

SIZE	PART #	
	d	L
M4	6	TC020406B
	8	TC020408B
	10	TC020410B
	12	TC020412B
	16	TC020416B
M5	20	TC020420B
	25	TC020425B
	8	TC020508B
	10	TC020510B
	12	TC020512B
	16	TC020516B
	20	TC020520B
M6	25	TC020525B
	30	TC020530B
	40	TC020540B
	10	TC020610B
	12	TC020612B
	16	TC020616B
	20	TC020620B
	25	TC020625B
M8	30	TC020630B
	40	TC020640B
	50	TC020650B
	12	TC020812B
	16	TC020816B
M8	20	TC020820B
	25	TC020825B
	30	TC020830B
	40	TC020840B
	50	TC020850B

### Non-Recess TRF



●Material : Stainless steel A2  
(Machine screw)

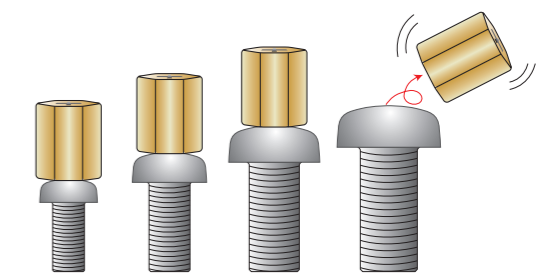


Size	M3	M4	M5	M6
Head Diameter (dk)	5.5	7.0	9.0	10.5
Head Height (k)	2.0	2.6	3.3	3.9
Hexagon Head	W. A. F			
	Height			
	Drive Size			
Head breaking torque (N·m)	1.47	1.96	2.55	4.22

- Easy installation by spana or cross recess driver.
- The hex head part will be removed once the screw fastened correctly.
- You can't remove easily since there is "No recess" on the surface. Please confirm the application when you install.

<Stock Size>

SIZE	PART #		Pkg q'ty
	d	L	
M3	6	NR010306	100
	8	NR010308	100
	10	NR010310	100
M4	8	NR010408	100
	10	NR010410	100
M5	12	NR010412	100
	10	NR010510	100
	12	NR010512	100
M6	16	NR010516	100
	12	NR010612	100
	16	NR010616	100
M6	20	NR010620	100
	25	NR010625	100



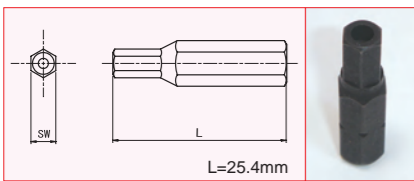
### USAGE

Please see page 40-41 for tools.



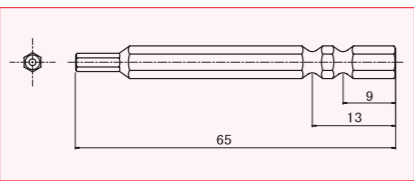
TOOLS

HEX BIT for TRF



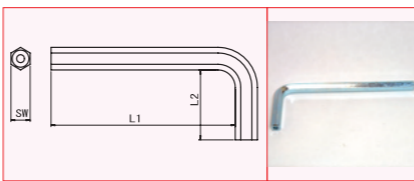
SIZE	PART #	Pkg q'ty	Remark	HEX SHANK SIZE
2	HE02B	1	M3	6.35
2.5	HE25B	1	M4	6.35
3	HE03B	1	M5	6.35
4	HE04B	1	M6	6.35
5	HE05B	1	M8	6.35
6	HE06B	1	M10	6.35
8	HE08B	1	M12	8
1/8"	HE18B	1	3.5	6.35
5/32"	HE532B	1	4.2/4.8	6.35

HEX BIT for TRF



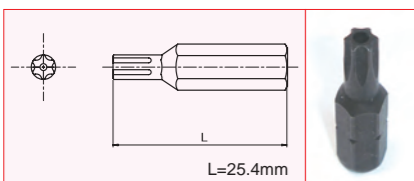
SIZE	PART #	Pkg q'ty	Remark	HEX SHANK SIZE
2	HE02B65	1	M3	6.35
2.5	HE25B65	1	M4	6.35
3	HE03B65	1	M5	6.35
4	HE04B65	1	M6	6.35

HEX KEY for TRF



SIZE	PART #	Pkg q'ty	Remark
2	HE02L	1	M3
2.5	HE25L	1	M4
3	HE03L	1	M5
4	HE04L	1	M6
5	HE05L	1	M8
6	HE06L	1	M10
8	HE08L	1	M12
1/8"	HE18L	1	3.5
5/32"	HE532L	1	4.2, 4.8

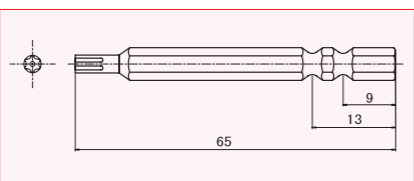
6-LOBE BIT for TRF



SIZE	PART #	Pkg q'ty	Remark	HEX SHANK SIZE
T6	TX06B	1	M2	6.35
T8	TX08B	1	M2.6	6.35
T10	TX10B	1	M3/ 1	6.35
T15	TX15B	1	2	6.35
T20	TX20B	1	M4/ 3	6.35
T25	TX25B	1	M5/4.8	6.35
T27	TX27B	1		6.35
T30	TX30B	1	M6	6.35
T40	TX40B	1	M8	6.35
T45	TX45B	1	M10	6.35

1--- 3.5 Button Tapping  
2--- 3.5 Flat Tapping / 4.2 Button Tapping  
3--- 4.2 Flat Tapping

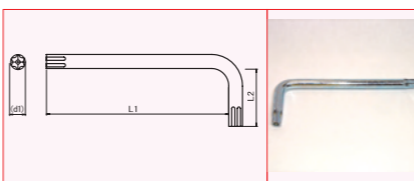
6-LOBE BIT for TRF



SIZE	PART #	Pkg q'ty	Remark	HEX SHANK SIZE
T6	TX06B65	1	M2	6.35
T8	TX08B65	1	M2.6	6.35
T10	TX10B65	1	M3/ 1	6.35
T15	TX15B65	1	2	6.35
T20	TX20B65	1	M4/ 3	6.35
T25	TX25B65	1	M5/4.8	6.35
T30	TX30B65	1	M6	6.35

1--- 3.5 Button Tapping  
2--- 3.5 Flat Tapping / 4.2 Button Tapping  
3--- 4.2 Flat Tapping

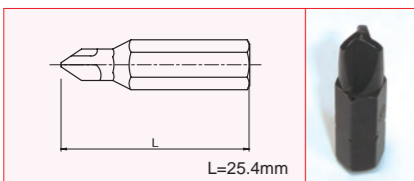
6-LOBE KEY for TRF



SIZE	PART #	Pkg q'ty	Remark
T6	TX06L	1	M2
T8	TX08L	1	M2.6
T10	TX10L	1	M3/ 1
T15	TX15L	1	2
T20	TX20L	1	M4/ 3
T25	TX25L	1	M5 / 4.8
T27	TX27L	1	
T30	TX30L	1	M6
T40	TX40L	1	M8
T45	TX45L	1	M10

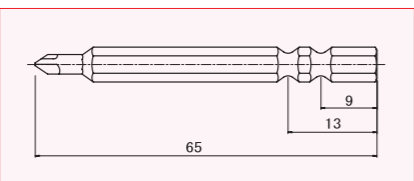
1--- 3.5 Button Tapping  
2--- 3.5 Flat Tapping / 4.2 Button Tapping  
3--- 4.2 Flat Tapping

TRI-WING BIT



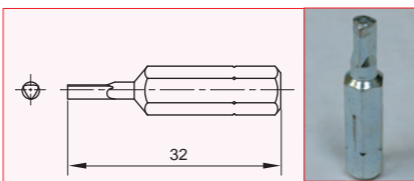
SIZE	PART #	Pkg q'ty	Remark	HEX SHANK SIZE
W2	TW02B	1	M3	6.35
W3	TW03B	1	3.5	6.35
W4	TW04B	1	M4/4.2	6.35
W5	TW05B	1	M5/4.8	6.35
W6	TW06B	1	M6	6.35
W7	TW07B	1	M8	6.35

TRI-WING BIT



SIZE	PART #	Pkg q'ty	Remark	HEX SHANK SIZE
W2	TW02B65	1	M3	6.35
W3	TW03B65	1	3.5/4	6.35
W4	TW04B65	1	M4/4.2	6.35

FUJIYAMA LOCK BIT

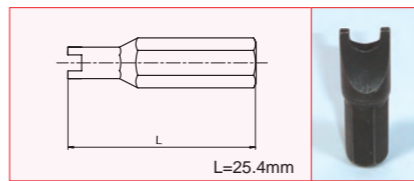


SIZE	PART #	Pkg q'ty	Remark	HEX SHANK SIZE
M3	EL03B	1	M3	6.35
M4	EL04B	1	M4	6.35
M5	EL05B	1	M5	6.35
M6	EL06B	1	M6	6.35

TRI-WING® is a registered trademark of Phillips screw Co.

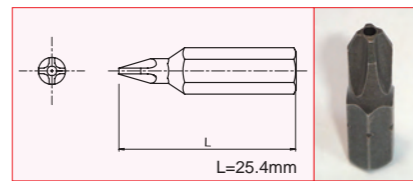
TOOLS

2 HOLE BIT



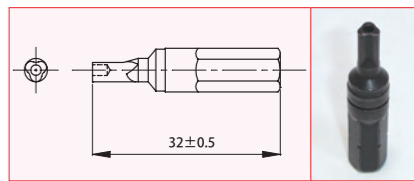
SIZE	PART #	Pkg q'ty	Remark	HEX SHANK SIZE
#4	SP04B	1	M3	6.35
#6	SP06B	1	3.5	6.35
#8	SP08B	1	M4/4.2	6.35
#10	SP10B	1	M5/4.8	6.35
#14	SP14B	1	M6	6.35

CROSS RECESS PIN BIT



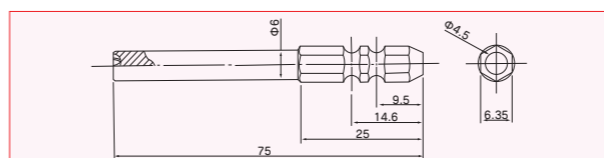
SIZE	PART #	Pkg q'ty	Remark	HEX SHANK SIZE
#2	PH02B	1	M3,M4,M5	6.35
#3	PH03B	1	M6	6.35

TRICLE BIT



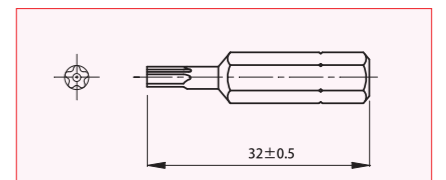
SIZE	PART #	Pkg q'ty	Remark	HEX SHANK SIZE
A 1	TC04A	1	M4	6.35
A 2	TC56A	1	M5/M6	6.35
A 2.5	TC08A	1	M8	6.35
B 1	TC04B	1	M4	6.35
B 2	TC56B	1	M5/M6	6.35
B 2.5	TC08B	1	M8	6.35

BIT for SYSTEM 6



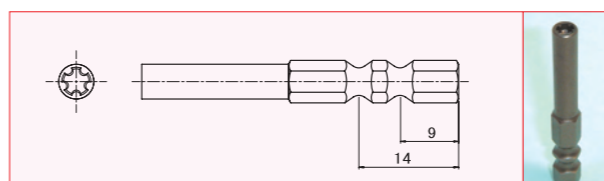
SIZE	PART#	Pkg q'ty	Remark	HEX SHANK SIZE
SS3	SS3B	10	M3	6.35
SS4	SS4B	10	M4	6.35
SS5	SS5B	10	M5	6.35
SS6	SS6B	10	M6	6.35

SAKURA LOCK BIT



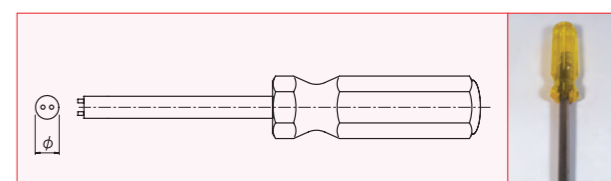
SIZE	PART #	Pkg q'ty	Remark	HEX SHANK SIZE
3	BK03B	1	M3	6.35
4	BK04B	1	M4	6.35
56	BK56B	1	M5,M6	6.35
8	BK08B	1	M8	6.35

BIT for SYSTEM 5



SIZE	PART #	Pkg q'ty	Remark	HEX SHANK SIZE
SF2	SF2B	1	M2/M2.3	6.35
SF3	SF3B	1	M2.5/M2.6	6.35

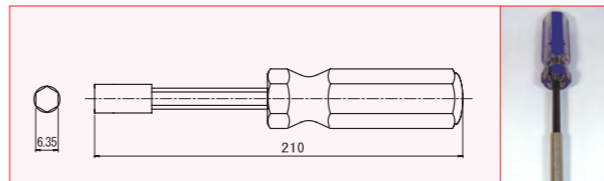
ONE SIDE REMOVAL TOOL



SIZE	PART #	Pkg q'ty	φ	Remark
#410	OW410	1	φ 8	M3/M4/3.5/4.2
#510	OW510	1	φ 10	M5/4.2/4.8
#610	OW610	1	φ 12	M6

The handle color is subject to change without notice.

MAGNETIC BIT HOLDER



SIZE	PART #	Pkg q'ty	HEX SHANK SIZE
1/4"	HEXDR	1	6.35
5/16"	HEXDR2	1	8

SPECIAL MADE TOOL



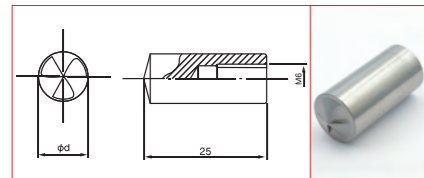
EL BK HE LP TX SP OW TW SF SS PH TC NR TOOLS / Order Made

EL BK HE LP TX SP OW TW SF SS PH TC NR TOOLS / Order Made

## TOOLS

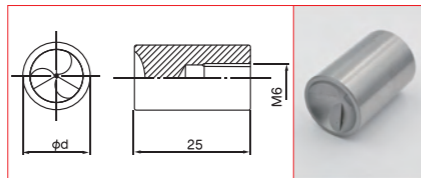
**Caution** : LAPIS tools are one way, can only be used when fastening. It is difficult to remove after fastened.

### BIT for LAPIS FLAT



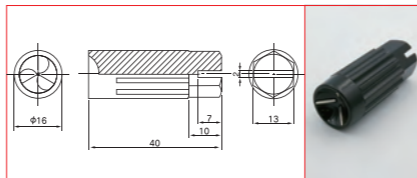
SIZE	PART#	Pkg q'ty
M3	LPFBM3	1
M4	LPFBM4	1
M5	LPFBM5	1
M6	LPFBM6	1

### BIT for LAPIS TRUSS



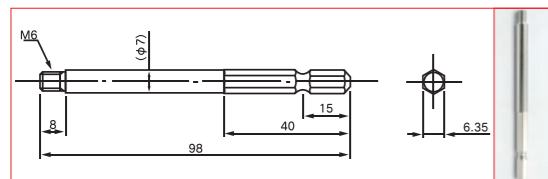
SIZE	PART#	Pkg q'ty
M3	LPTBM3	1
M4	LPTBM4	1
M5	LPTBM5	1
M6	LPTBM6	1

### PLASTIC TOOL for LAPIS TRUSS



PART#	Pkg q'ty	Remark
LPT-PTM6	1	Only for M6 TH

### SHAFT for LAPIS BIT



PART#	Pkg q'ty	Remark	HEX SHANK SIZE
LPBS	1	Common	6.35



## Made-to-order TRF

- \* Set screw
- \* Miniature type screws
- \* Special recess
- \* Special thread type(for plastic screws etc.)



## PROFILE

### COMPANY

310EXPRESS COMPANY (A DIV. OF SAIMA CORP.)

### HEAD OFFICE

2-9-17 Tsujido, Fujisawa, Kanagawa, 251-0047, Japan  
 TEL:+81-466-36-3656 FAX:+81-466-36-0009  
 Mail:info@310ex.com http://www.310ex.com

### CHINA

KOAS CORPORATION  
 1206 Xindu Bldg., No.50 Juqian Road, Changzhou 213000, Jiangsu, China  
 TEL:+86-519-88101398 FAX:+81-519-810-8938

KOAS CORPORATION Warehouse  
 5F, XiJia, Block A, Tianan Industrial Park  
 Xinbei,Changzhou Jiangsu China,231001  
 TEL:+86-519-8810-1398 FAX:+81-519-8810-8938

### SPC

(SAIMA PREMIUM CLUB)

### MALAYSIA

ANT INDUSTRIAL SDN BHD  
 No 4, Jalan Industri USJ1/4, Taman Perindustrian USJ1,  
 47610 Subang Jaya, Selangor, Malaysia  
 MAIL: inquiry@ant-ind.com TEL:+603-8023-2010

### SINGAPORE

SYNERGIX SAIMA (S) PTE. LTD.  
 61 Bukit Bastok Crescent , #05-07 Heng Loong Bldg. , Singapore 658078  
 MAIL:sales@synergixfast.com TEL:+65 6 316 2630

### ESTABLISH

Jan. 1952

### STAFF

70 (including group office)

### CAPITAL

JPY10,000,000-



### Purchasing Order

**FAX** +81-466-36- 0009

**TEL** +81-466-36-3656

**EMAIL** info@310ex.com

**310EXPRESS COMPANY**  
 A div. of SAIMA CORP.

2-9-17 Tsujido, Fujisawa, Kanagawa, 251-0047, Japan  
 TEL:+81-466-36-3656 FAX:+81-466-36-0009  
 info@310ex.com www.310ex.com



TRF series are satisfied with RoHS Directive.  
 (Lead / Cadmium / Mercury / 6 Chromium / PBB / PBDE)

[www.310ex.com](http://www.310ex.com)

[info@310ex.com](mailto:info@310ex.com)

[www.310ex.com](http://www.310ex.com)



EL

BK

HE

LP

TX

SP

OW

TW

SF

SS

PH

TC

NR

TOOLS /  
Order Made





# 310Tammer

 JAPAN



**310express Company**  
*A div. of SAIMA CORP.*

**2-9-17 Tsujido, Fujisawa, Kanagawa**  
**251-0047, Japan**

**TEL:+81-466-36-3656**

**FAX:+81-466-36-0009**

**<http://www.310ex.com>**

**[info@310ex.com](mailto:info@310ex.com)**

