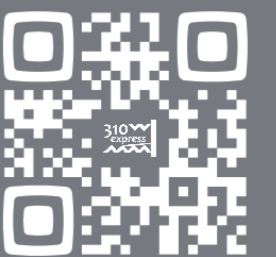
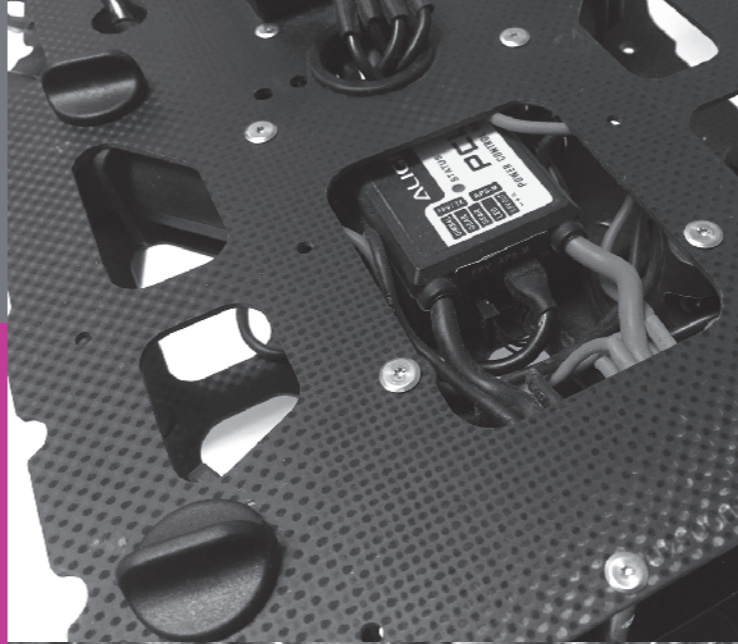




310express Company
A div. of SAIMA CORP.

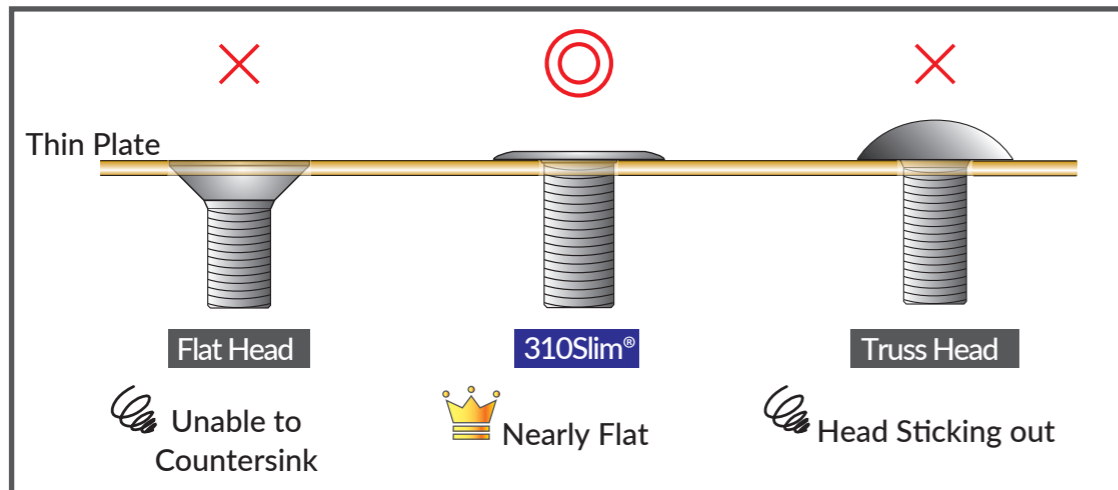
2-9-17 Tsujido, Fujisawa, Kanagawa
251-0047, Japan

TEL:+81-466-36-3656
FAX:+81-466-36-0009
<http://www.310ex.com>
info@310ex.com



BEST SCREW FOR THIN PLATE FASTENING

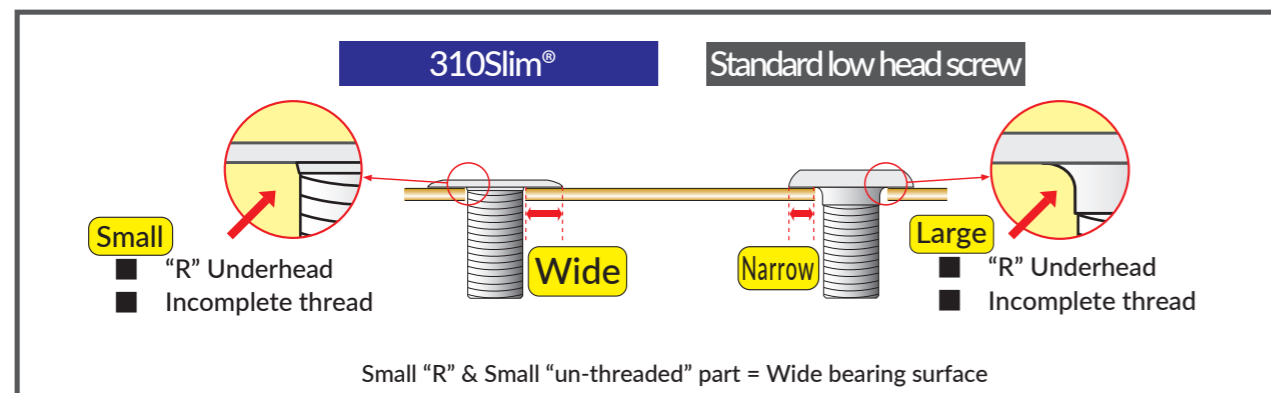
Flat head screw is not applicable on thin plate since you will not have enough space for countersinking. 310Slim® achieve nearly flat surface without the head sticking out like truss or pan head screws.



COMPACT DESIGN UNDERHEAD "R" & "UN-THREADED" PART

310Slim® will help to optimize a compact design. Underhead "R" & "Un-threaded" part is designed very small to have bearing surface wide.

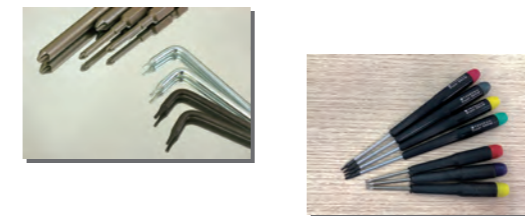
- Small "R" = Small clearance hole = Wide bearing surface ⇒ Stable Fastening
- Small "un-threaded" part = Fully threaded under the head ⇒ Best for thin plate fastening




2 RECESS TYPES "6-LOBE" AND "QUA"

■ "6-Lobe" (hexalobular) is a standard recess as it is well known in JIS or ISO (JIS B 1015/ ISO 10664). Therefore, tools are easily can be purchased anywhere at your local DIY stores, hardware supplier, and needless to say, at SAIMA online shop.

■ "Qua" is the advanced cross recess which works perfectly if special "Qua" bit applied. You can also use standard cross recess driver for your convenience.




6-Lobe



JIS B1015 / ISO10664
Standard hexalobular recess

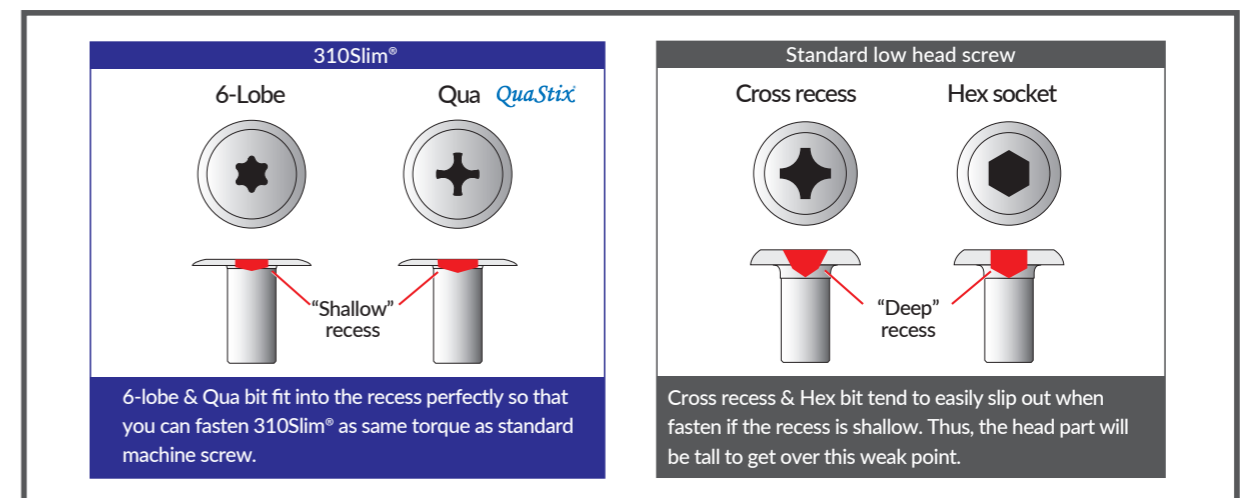
Qua



Prevent tools CAM-OUT
by using "QUA" bit.

GOOD TORQUE TRANSMISSION

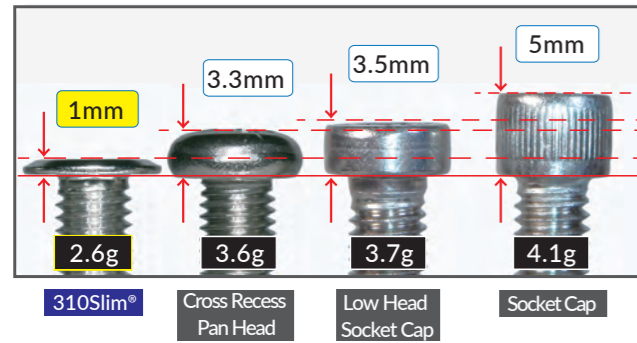
310Slim® has "6-lobe" or "Qua" recess to make the head part extremely thin. Both recesses have good torque transmission rather than the others such as cross recess or hex socket and the bit fits into the recess perfectly even the recess designed shallow. As a result, you can replace from standard machine screw to 310Slim® today.



COMPARISON CHART

Head Height

■ M5x20 Stainless A2

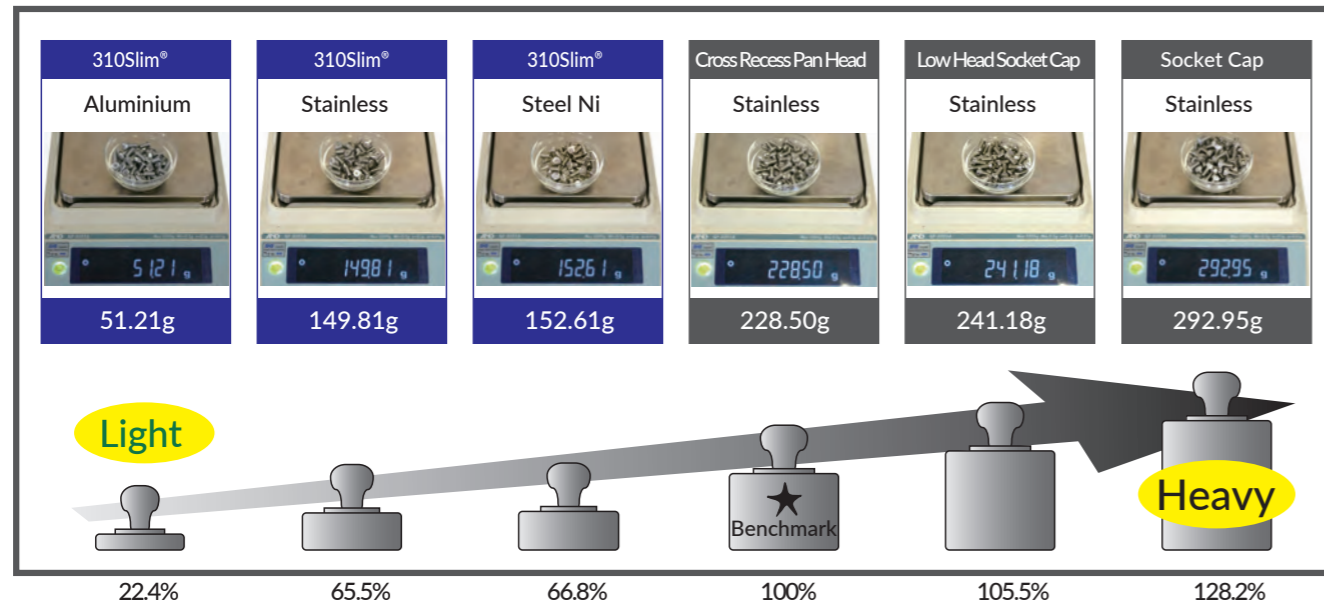


M5x20 Stainless	310Slim®	Cross Recess Pan Head Screw	Low Head Socket Cap (DIN7984)	Socket Cap (DIN912)
Head Height	1.0mm	3.3mm	3.5mm	5.0mm
Weight	2.6g	3.6g	3.7g	4.1g



Weight

■ 100pcs. M5x10 screws in various materials.



ALL OUR STOCK PLATING GUARANTEE

- Steel 3Cr plating ⇒ 5µm⁺ thickness
- Steel Nickel plating ⇒ Cu + Ni



Steel 3Cr



Steel Nickel
Steel Black Nickel

ALL OUR STOCK HEAD STRENGTH GUARANTEE

310Slim® can be used as same fastening torque as standard 4.8 machine screw that is certified by the below chart. Easy to replace from standard machine screws. Please see the chart below.

■ Standard machine screw fastening torque < 310Slim® Min. breaking torque

Unit : N.m

Steel & Stainless A2	M2	M2.6	M3	M4	M5	M6
Machine Screws (Steel 4.8) Standard fastening torque*	0.17	0.35	0.63	1.48	2.98	5.07
310Slim® Minimum breaking torque	0.40	0.50	0.95	2.30	4.00	10.0

Aluminium	M2	M2.6	M3	M4	M5	M6
Machine Screws (Al, Brass, Cu) Standard fastening torque*	-	-	0.31	0.74	1.49	2.55
310Slim® Minimum breaking torque	-	-	0.45	1.0	1.7	3.3

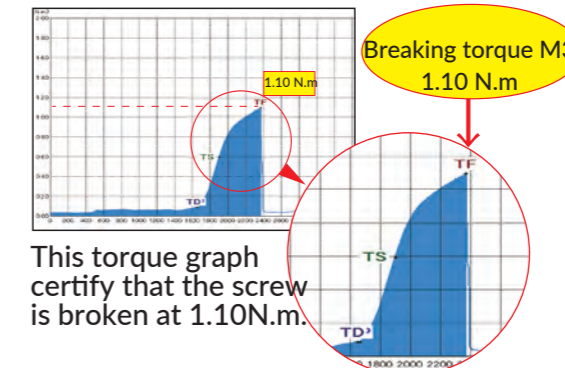
*Excerpt a reference from TOHNICHI Co. Torque Handbook

310Slim®'s breaking torque is much higher than standard machine screw's fastening torque. 310Slim® won't break as far as it is fastened under standard fastening torque.

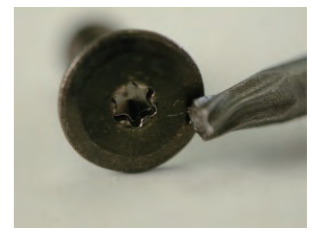
■ Breaking torque test (310Slim® M3x6 Steel Black Ni)



310Slim® breaking torque tested by torque analyzer.



This torque graph certify that the screw is broken at 1.10N.m.



No damage on the recess. The bit is broken instead!

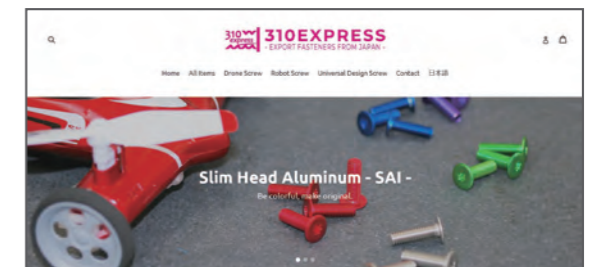
ONLINE STORE

Quick purchase at our web-shop.

Material :
Stainless A2, Steel 3Cr, Steel Black 3Cr,
Steel Nickel, Steel Black Nickel,
Aluminium, Anodized Aluminium

All in stock. Export from 1 pack.

<https://saima-shop.com/>





310SLIM® 6-LOBE MACHINE SCREW ALUMINIUM SERIES



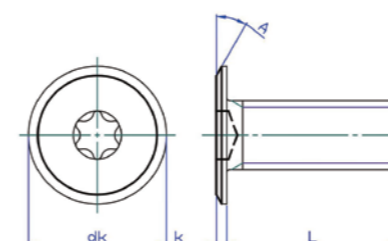
LIGHT

- 1/3 weight only comparing Steel or Stainless steel.
- 100pcs standard pack in stock.



INDEX

- 310SLIM® 6-LOBE MACHINE SCREW ALUMINIUM SERIES 7
- 310SLIM® 6-LOBE MACHINE SCREW STAINLESS SERIES 8
- 310SLIM® 6-LOBE MACHINE SCREW STEEL SERIES 9
- 310SLIM® QUA MACHINE SCREW 10
- 310SLIM® NON-SERT THREAD FORMING TAPPING SCREW 10
- TOOL & ASSORTMENT BOX 11



	M3	M4	M5	M6
dk	7	8	9	12
k	0.8	0.9	1.0	1.2
t (min)	0.75	0.9	1.0	1.2
Drive	T6	T8	T10	T20
A Approx.	30°	30°	30°	30°
Min Failure Torque	0.45 N.m	1.0 N.m	1.7 N.m	3.3 N.m

Aluminium RoHS

Size	Part#		Pkg Q'ty
	d	L	
M3	6	SH010306AL	100
	8	SH010308AL	100
	10	SH010310AL	100
M4	8	SH010408AL	100
	10	SH010410AL	100
	12	SH010412AL	100
	16	SH010416AL	100
M5	10	SH010510AL	100
	12	SH010512AL	100
	16	SH010516AL	100
	20	SH010520AL	100
M6	10	SH010610AL	100
	12	SH010612AL	100
	16	SH010616AL	100
	20	SH010620AL	100

Anodized Aluminium RoHS

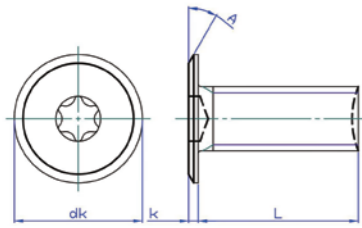
Size	Part#		Pkg Q'ty
	d	L	
M3	6	SH010306ALMBK	100
	8	SH010308ALMBK	100
	10	SH010310ALMBK	100
M4	8	SH010408ALMBK	100
	10	SH010410ALMBK	100
	12	SH010412ALMBK	100
	16	SH010416ALMBK	100
M5	10	SH010510ALMBK	100
	12	SH010512ALMBK	100
	16	SH010516ALMBK	100
	20	SH010520ALMBK	100
M6	10	SH010610ALMBK	100
	12	SH010612ALMBK	100
	16	SH010616ALMBK	100
	20	SH010620ALMBK	100

BK = Black, B = Blue, G = Green, P = Purple, R = Red

310SLIM® 6-LOBE MACHINE SCREW STAINLESS SERIES



- Good corrosion resistance, best for thin plate fastening.
- 100pcs standard pack in stock.



	M2	M2.6	M3	M4	M5	M6	#6	#8	#10
dk	4	6	7	8	9	12	7.5	8.0	8.5
k	0.5	0.6	0.8	0.9	1.0	1.2	0.85	0.9	0.95
t (min)	0.4	0.5	0.75	0.9	1.0	1.2	0.75	0.9	0.9
Drive	T4	T5	T6	T8	T10	T20	T6	T8	T8
A approx.	30°	30°	30°	30°	30°	30°	30°	30°	30°
Min Failure Torque	0.4 N.m	0.5 N.m	0.95 N.m	2.3 N.m	4.0 N.m	10 N.m	0.95 N.m	2.3 N.m	2.3 N.m

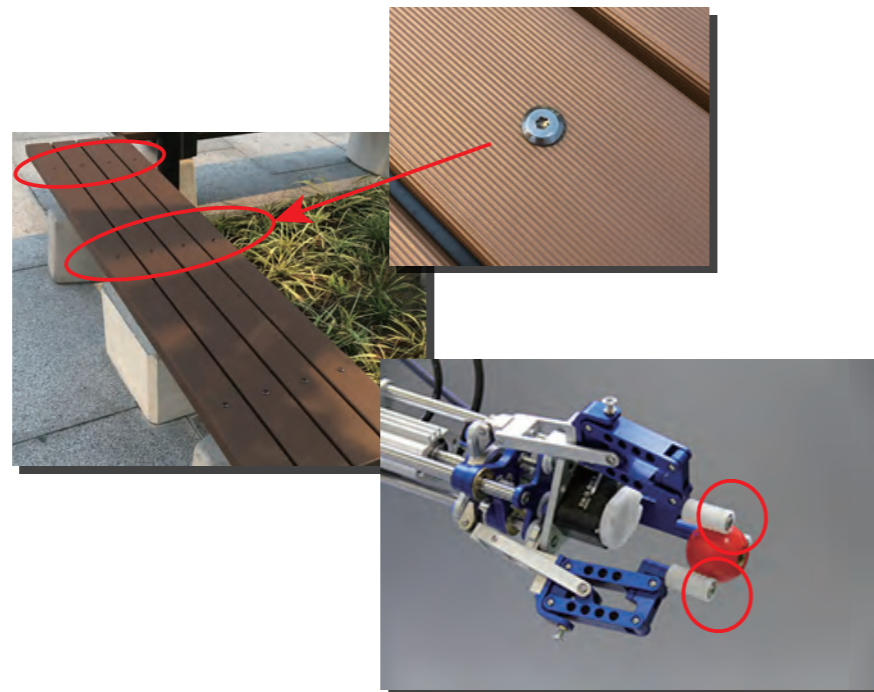
* K value is reference Only for Head Painted Product.

NEW

Stainless A2 | Blacken | Bronze | Light Bronze



Size	Part#		Pkg Q'ty
	d	L	
M2	4	SH010204A2	100
	5	SH010205A2	100
	6	SH010206A2	100
	8	SH010208A2	100
	10	SH010210A2	100
M2.6	4	SH012604A2	100
	5	SH012605A2	100
	6	SH012606A2	100
	8	SH012608A2	100
	10	SH012610A2	100
M3	5	SH010305A2	100
	6	SH010306A2	100
	8	SH010308A2	100
	10	SH010310A2	100
	12	SH010312A2	100
M4	6	SH010406A2	100
	8	SH010408A2	100
	10	SH010410A2	100
	12	SH010412A2	100
	16	SH010416A2	100
M5	8	SH010508A2	100
	10	SH010510A2	100
	12	SH010512A2	100
	16	SH010516A2	100
	20	SH010520A2	100
M6	8	SH010608A2	100
	10	SH010610A2	100
	12	SH010612A2	100
	16	SH010616A2	100
	20	SH010620A2	100



*Head painted product is also available.

310SLIM® 6-LOBE MACHINE SCREW STEEL SERIES



- Beautiful appearance, best choice for stylish furniture.
- 100pcs standard pack in stock.



Steel 3Cr | Surface Hardness HV400min



Size	Part#		Pkg Q'ty
	d	L	
M3	6	SH010306Cr3	100
	8	SH010308Cr3	100
	10	SH010310Cr3	100
M4	6	SH010406Cr3	100
	8	SH010408Cr3	100
	10	SH010410Cr3	100
M5	8	SH010508Cr3	100
	10	SH010510Cr3	100
	12	SH010512Cr3	100

Inch Steel 3Cr | Surface Hardness HV400min



Size	Part#		Pkg Q'ty
	d	L	
#6-32	1/4	SH01.00632.020Cr3	100
	3/8	SH01.00632.030Cr3	100
	1/2	SH01.00632.040Cr3	100
#8-32	3/4	SH01.00632.060Cr3	100
	1/4	SH01.00832.020Cr3	100
	3/8	SH01.00832.030Cr3	100
#10-24	1/2	SH01.00832.040Cr3	100
	3/4	SH01.00832.060Cr3	100
	1/2	SH01.01024.040Cr3	100
#10-32	5/8	SH01.01024.050Cr3	100
	3/4	SH01.01024.060Cr3	100
	1/2	SH01.01032.040Cr3	100
#10-32	5/8	SH01.01032.050Cr3	100
	3/4	SH01.01032.060Cr3	100

Steel Nickel | Surface Hardness HV400min



Size	Part#		Pkg Q'ty
	d	L	
M3	6	SH010306Ni	100
	8	SH010308Ni	100
	10	SH010310Ni	100
M4	6	SH010406Ni	100
	8	SH010408Ni	100
	10	SH010410Ni	100
M5	8	SH010508Ni	100
	10	SH010510Ni	100
	12	SH010512Ni	100
M6	16	SH010516Ni	100

Steel Black Nickel | Surface Hardness HV400min

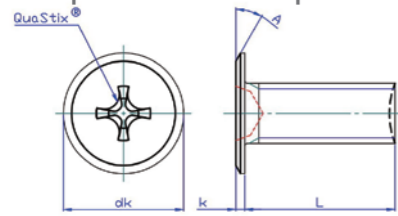


Size	Part#		Pkg Q'ty
	d	L	
M3	6	SH010306BNi	100
	8	SH010308BNi	100
	10	SH010310BNi	100
M4	6	SH010406BNi	100
	8	SH010408BNi	100
	10	SH010410BNi	100
M5	8	SH010508BNi	100
	10	SH010510BNi	100
	12	SH010512BNi	100
M6	16	SH010516BNi	100

310SLIM® QUA MACHINE SCREW & 310SLIM® QUA THREAD FORMING TAPPING SCREW TYPE A



- Advanced cross recess. Standard Cross Recess bit also apply.
- 100pcs standard pack in stock.



	M3	M4
dk	7	8
k	0.8	0.9
QS No.	1	2
A approx.	30°	30°
Min Failure Torque	0.95 N.m	2.3 N.m



QUA Steel 3Cr | Surface Hardness HV400min

Size		Part#	Pkg Q'ty
d	L		
M3	6	QSH010306	100
	8	QSH010308	100
	10	QSH010310	100
	12	QSH010312	100
M4	8	QSH010408	100
	10	QSH010410	100
	12	QSH010412	100
	16	QSH010416	100
M5	8	QSH010508	100
	10	QSH010510	100
	12	QSH010512	100
	16	QSH010516	100

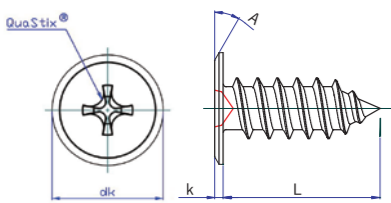
QUA Steel black 3Cr | Surface Hardness HV400min

Size		Part#	Pkg Q'ty
d	L		
M3	6	QSH010306BK	100
	8	QSH010308BK	100
	10	QSH010310BK	100
	12	QSH010312BK	100
M4	8	QSH010408BK	100
	10	QSH010410BK	100
	12	QSH010412BK	100
	16	QSH010416BK	100
M5	8	QSH010508BK	100
	10	QSH010510BK	100
	12	QSH010512BK	100
	16	QSH010516BK	100

Qua Stainless A2

Size		Part#	Pkg Q'ty
d	L		
M3	6	QSH010306A2	100
	8	QSH010308A2	100
	10	QSH010310A2	100
M4	8	QSH010408A2	100
	10	QSH010410A2	100
	12	QSH010412A2	100
M5	8	QSH010508A2	100
	10	QSH010510A2	100
	12	QSH010512A2	100
	16	QSH010516A2	100

《TAPPING A》



TAPPING SCREW

	3	4
dk	7	8
k	0.8	0.9
QS No.	1	2
A approx.	30°	30°

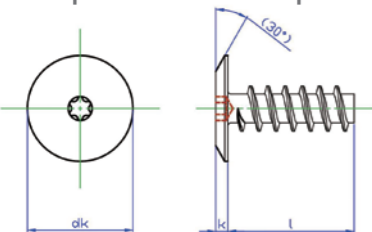
QUA Steel 3Cr | Tapping A

Size		Part#	Pkg Q'ty
d	L		
M3	8	QSH010308A	100
	10	QSH010310A	100
	12	QSH010312A	100
M4	10	QSH010410A	100
	12	QSH010412A	100
	16	QSH010416A	100
	20	QSH010420A	100

310SLIM® NON-SERT THREAD FORMING TAPPING SCREW



- 6-Lobe recess extremely thin head tapping screw for soft plastic.
- 100pcs standard pack in stock.



	3	4	5
dk	7	8	9
k	0.8	0.9	1.0
t(min)	0.5	0.5	0.6
Drive	T6	T8	T10



310SLIMNS Steel 3Cr

Size		Part#	Pkg Q'ty
d	L		
3	6	NS010306SH	100
	8	NS010308SH	100
	10	NS010310SH	100
4	8	NS010408SH	100
	10	NS010410SH	100
	12	NS010412SH	100
5	10	NS010510SH	100
	12	NS010512SH	100

310SLIMNS Steel black 3Cr

Size		Part#	Pkg Q'ty
d	L		
3	6	NS010306SHBK	100
	8	NS010308SHBK	100
	10	NS010310SHBK	100
	12	NS010412SHBK	100
4	8	NS010408SHBK	100
	10	NS010410SHBK	100
	12	NS010412SHBK	100
	16	NS010416SHBK	100
5	10	NS010510SHBK	100
	12	NS010512SHBK	100

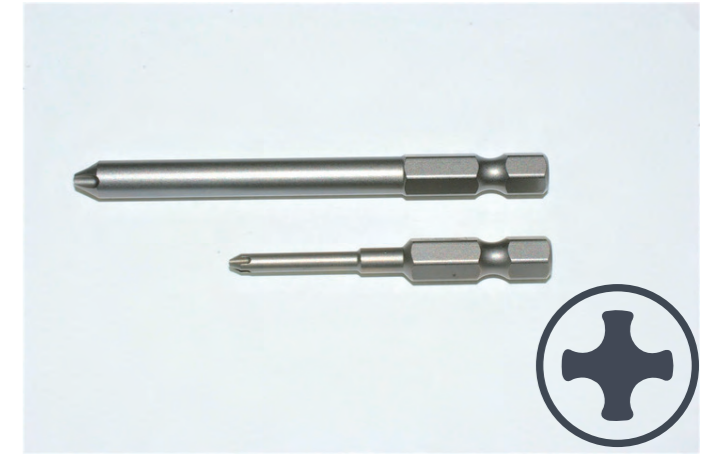
TOOL & ASSORTMENT BOX

- 6-Lobe recess(JIS B1015/ISO10664) key and QUA bit for perfect fit on recess.
- 1pc. standard pack in stock.



6-Lobe Key

PART #	Pkg Q'ty	Remark
T4 TRX04L	1	M2
T5 TRX05L	1	M2.6



BIT for 310SLIMQUA

PART #	Length	Pkg Q'ty	Remark
1 QS01B50-6.35	50mm	1	M3
2 QS02B75-6.35	70mm	1	M4

* WAF6.35



6-Lobe Hand Driver Tool

PART #	Pkg Q'ty	Remark
T4 6LB04DR	1	M2
T5 6LB05DR	1	M2.6
T6 6LB06DR	1	M3
T8 6LB08DR	1	M4
T10 6LB10DR	1	M5
T20 6LB20DR	1	M6
4pcs. Set 6LBDR-4S	4	M2 M2.6 M3 M4
6pcs. Set 6LBDR-6S	6	M2 M2.6 M3 M4 M5 M6



310Slim® 6-lobe Machine Screw Assortment Box

Part# : 310SHBXA2 (Stainless A2)
15 pcs. each
Sizes : M2x5 | M2x6 | M2x8
M2.6x6 | M2.6x8 | M2.6x10
M3x6 | M3x8 | M3x10 | M3x12
M4x6 | M4x8 | M4x10 | M4x12
M4x16 | M4x20

Part# : 310SHBXST (Steel)
30 pcs. each
Sizes : STEEL 3CR
M3x6 | M3x8 | M4x8 | M4x10
STEEL NI PLATED
M3x8 | M4x8
STEEL BLACK NI PLATED
M3x6 | M3x8 | M4x8 | M4x10